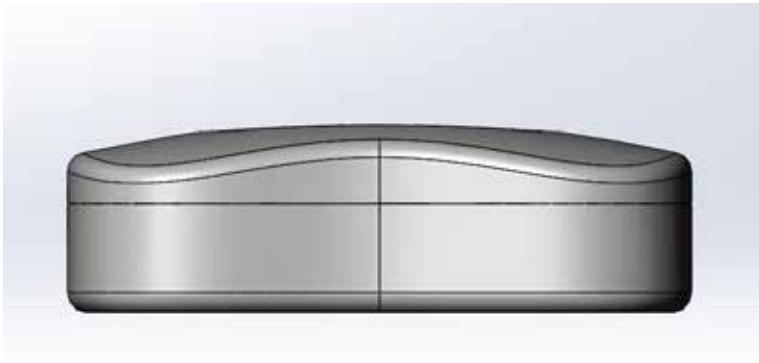
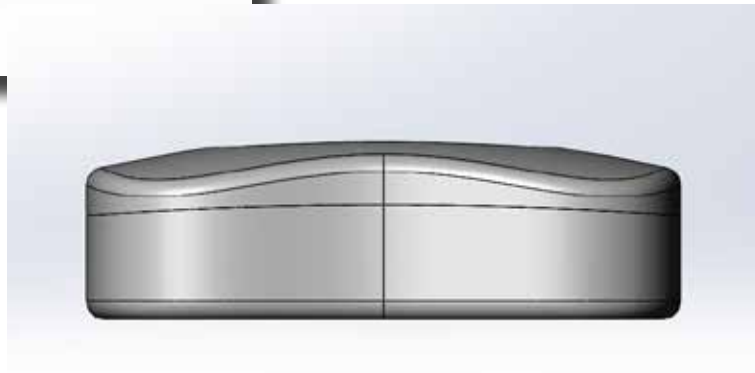


Solidworks - Using Split Tool

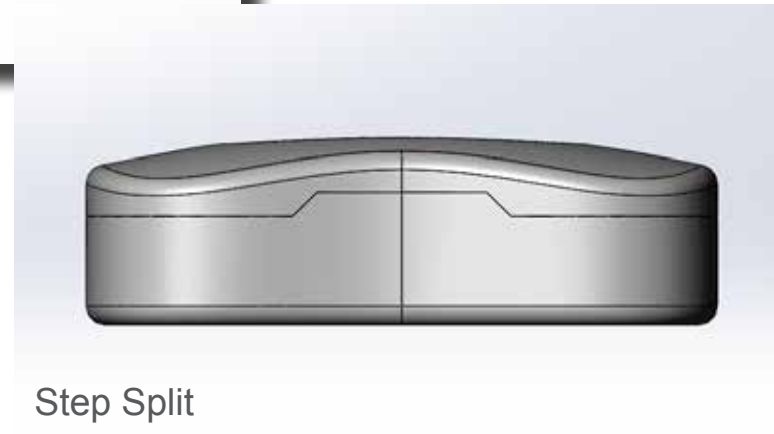
Introduction This tutorial covers using the split tool in Solidworks. The Split tool is used to separate a part into two or more bodies. This tutorial will demonstrate splitting a part in 3 different ways.



Straight Split



Curved Split

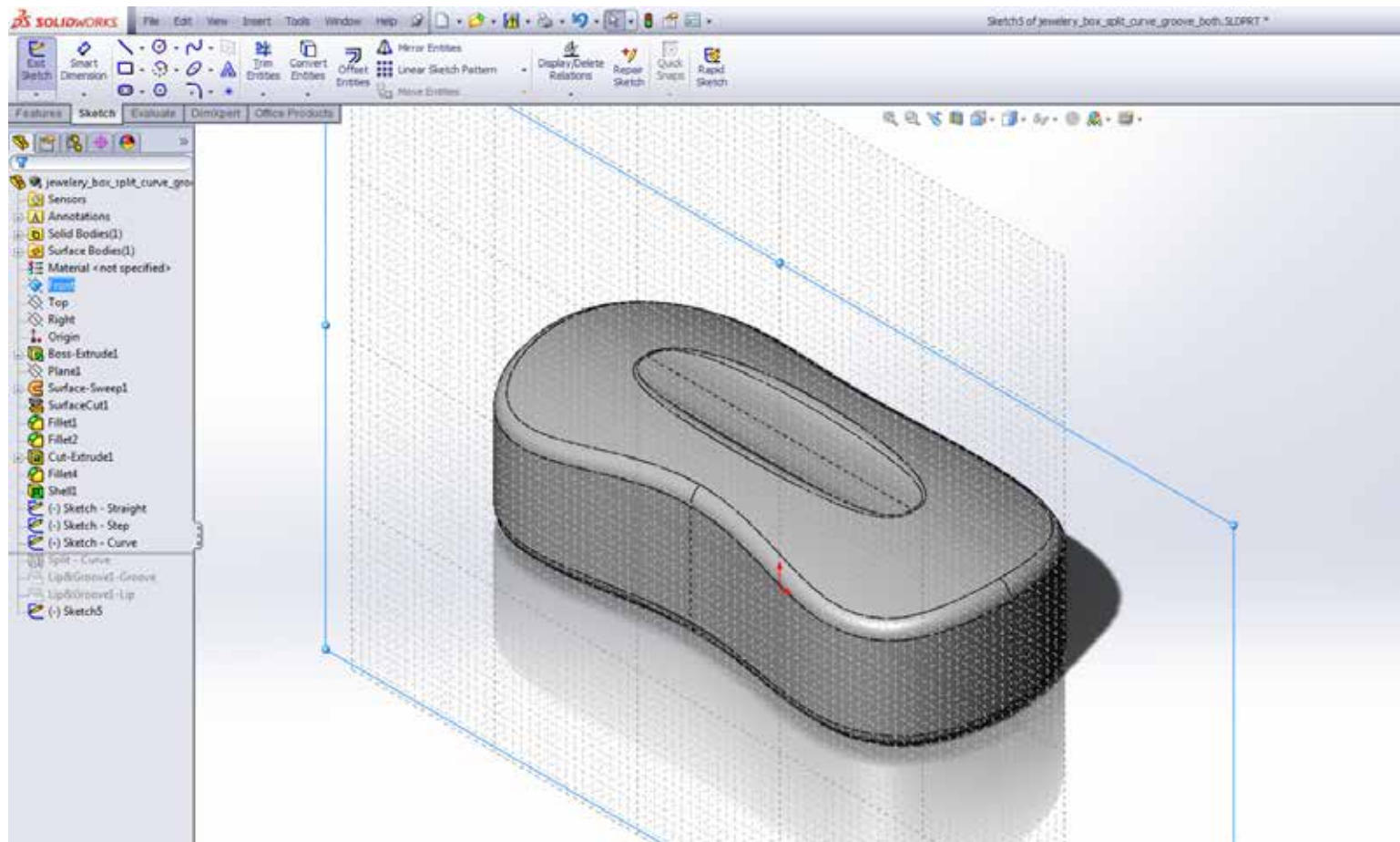


Step Split

Solidworks - Using Split Tool

Step 1 Start by creating a sketch that will be at 90 degrees to the direction you want to cut. For this example, the front plane was selected.

plane

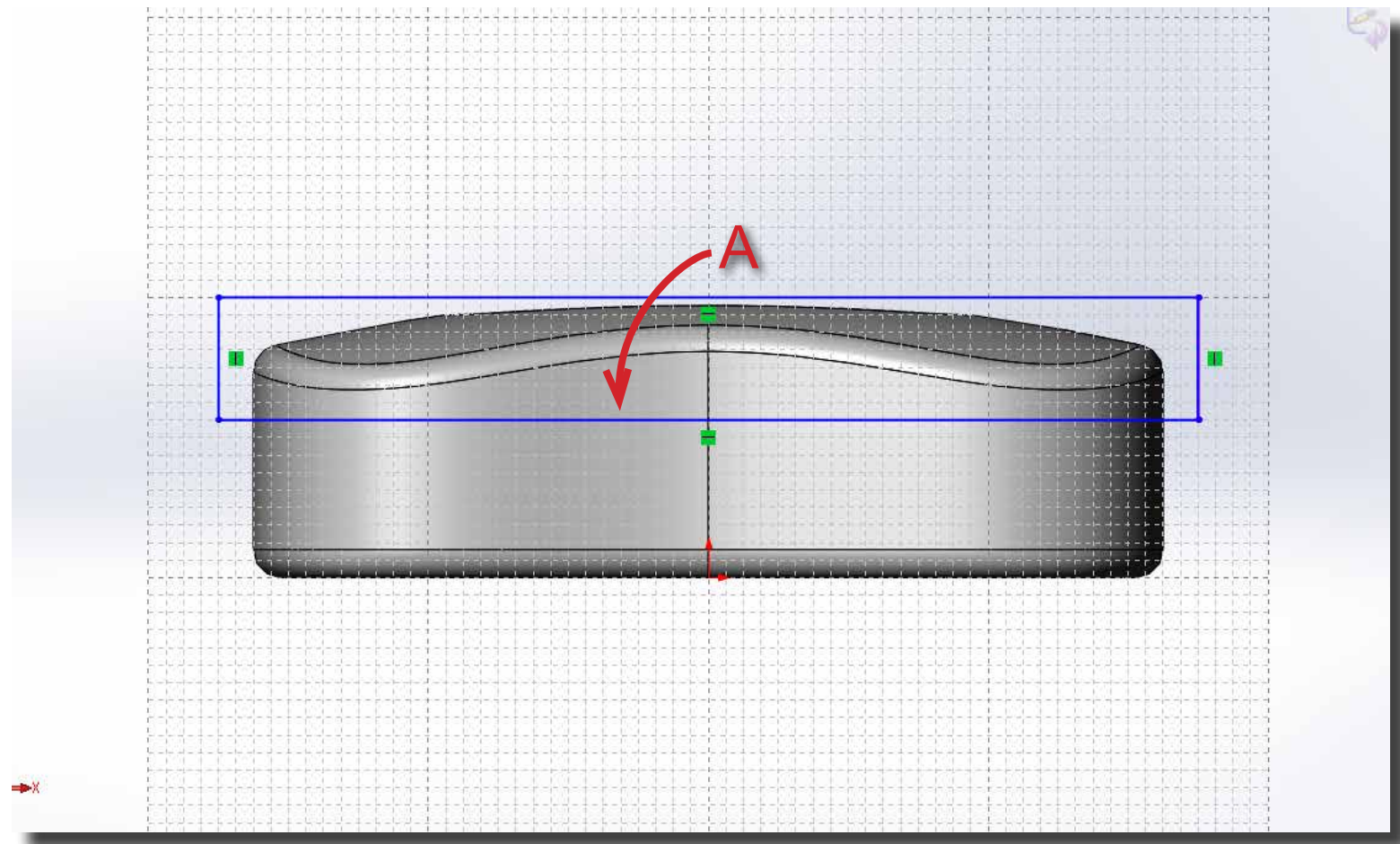


Solidworks - Using Split Tool

Step 2

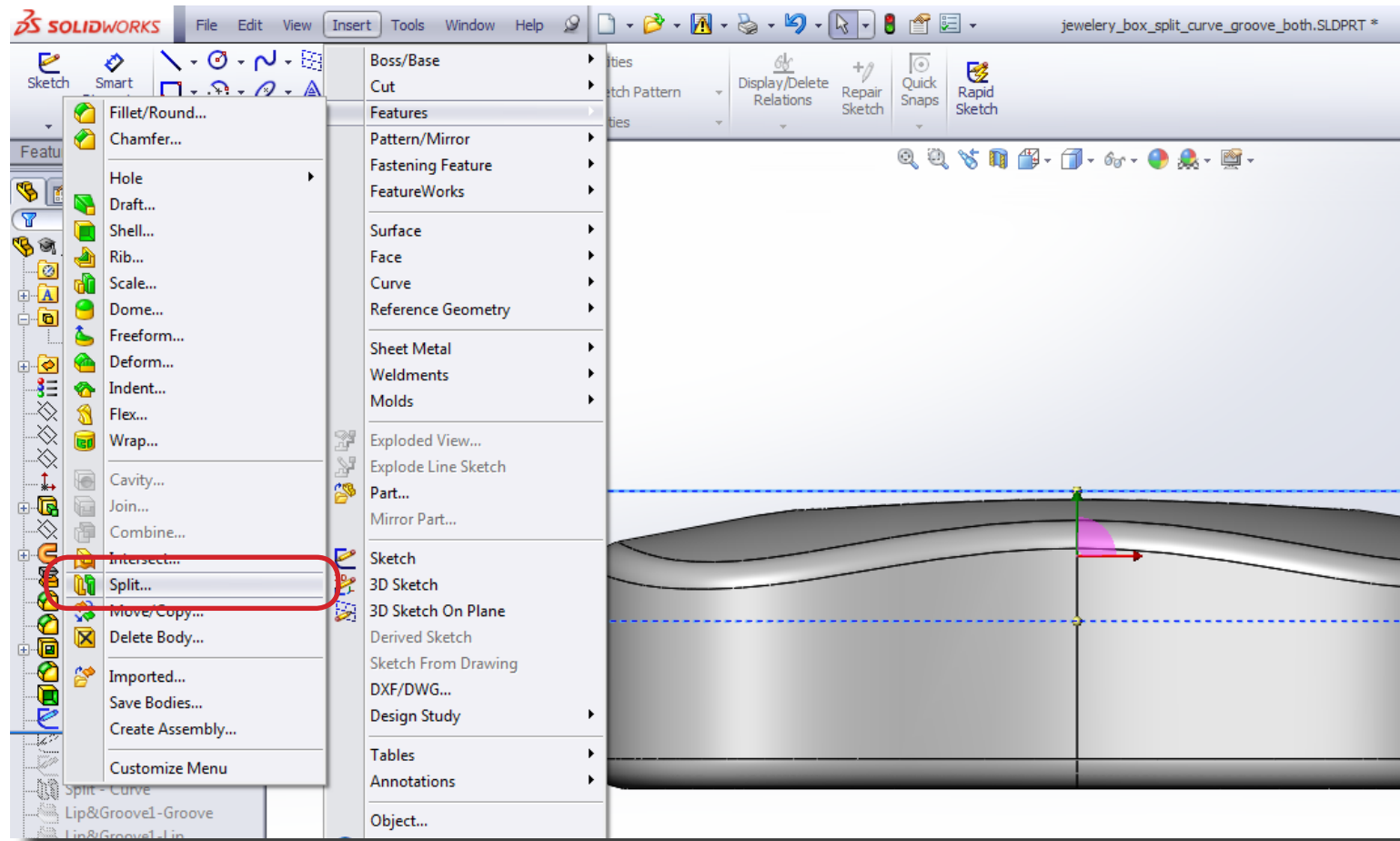
Start the sketch by creating a horizontal line (A) where you want to split the body. Then create a loop around one of the parts that would result after the split. In this case the top part was encapsulated. Confirm the sketch once the loop is complete.

In



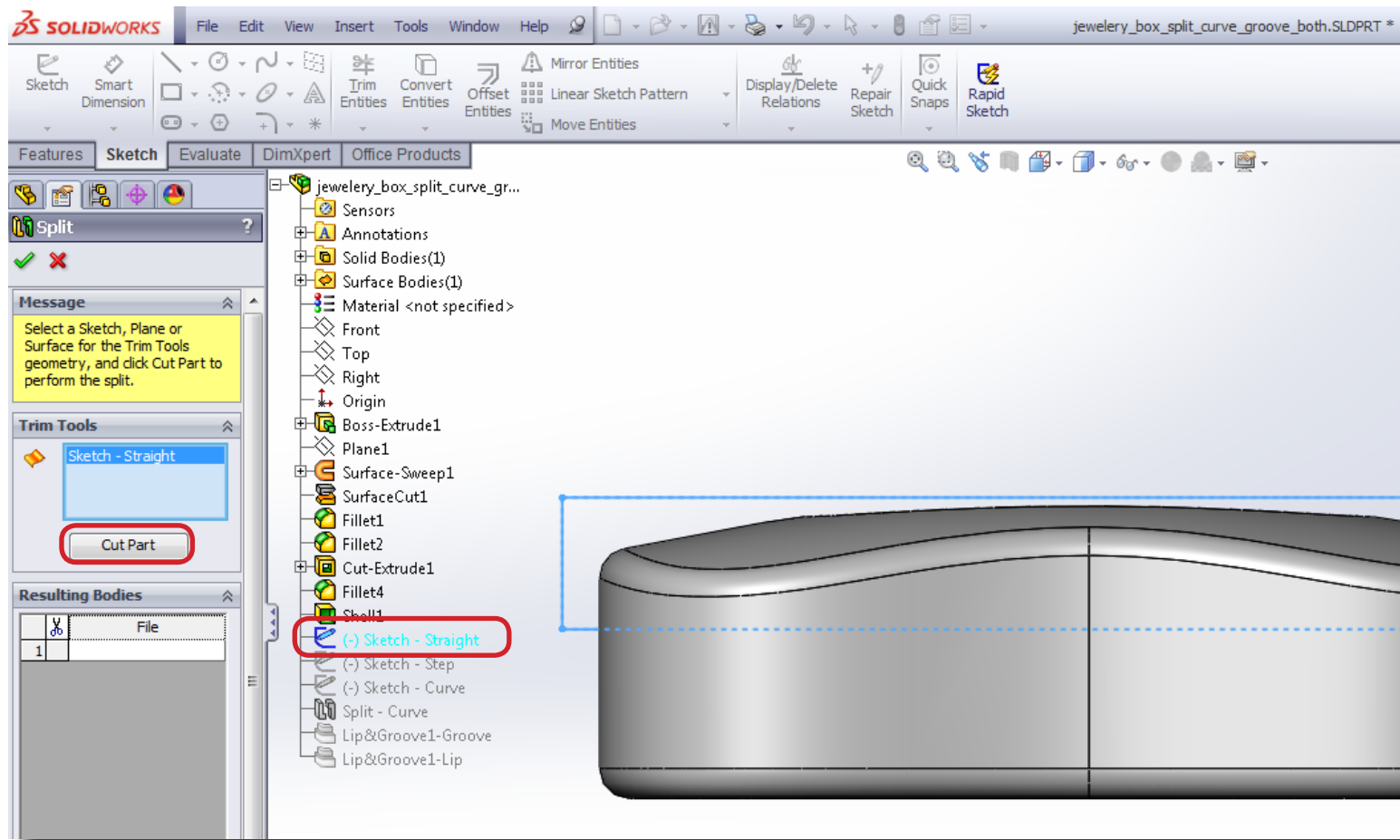
Solidworks - Using Split Tool

Step 3 After confirming the sketch, go to Insert > Features > Split.



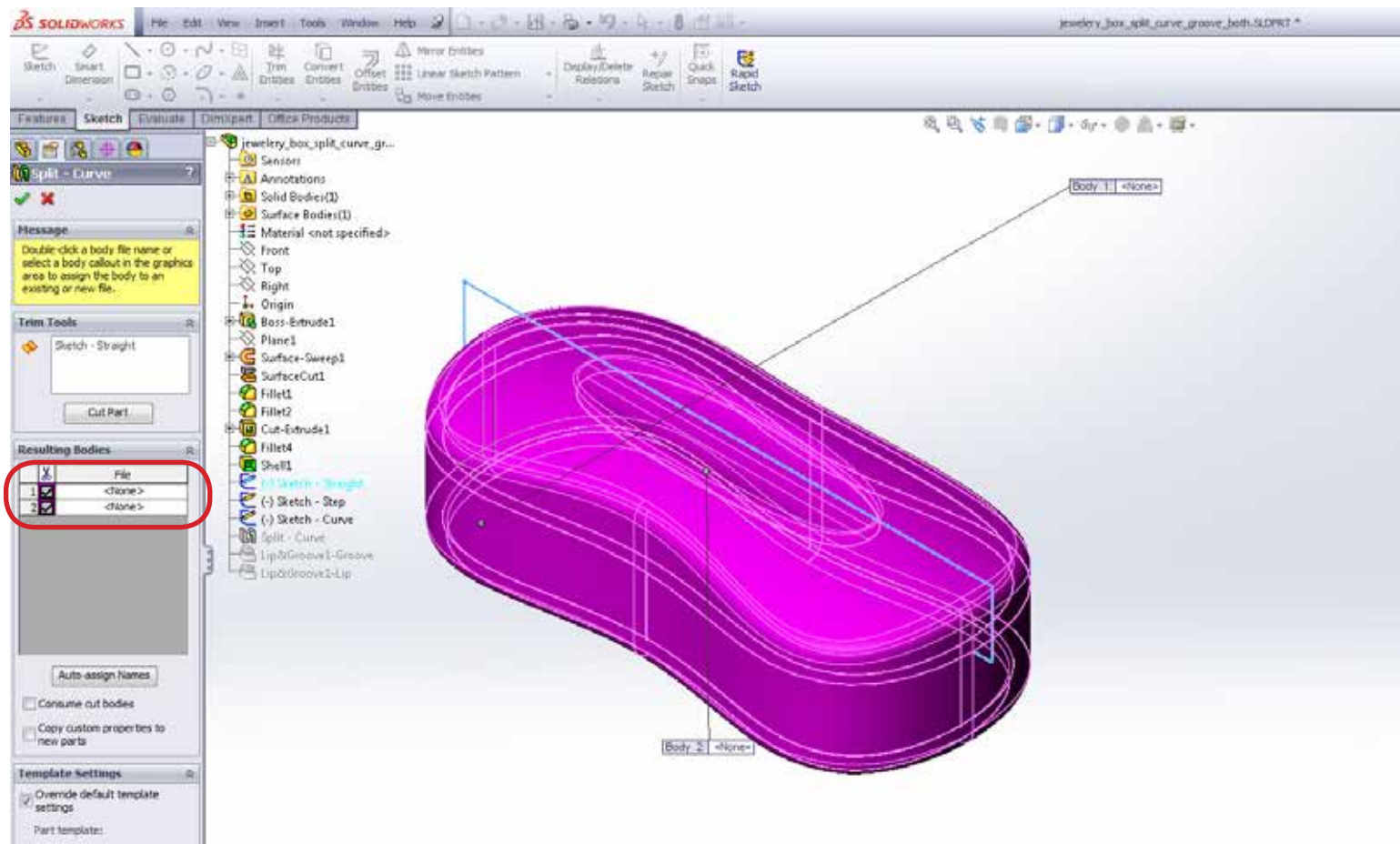
Solidworks - Using Split Tool

Step 4 In the Split tool window, select the sketch you just created. Click on the 'Cut Part' button to actually perform the split.



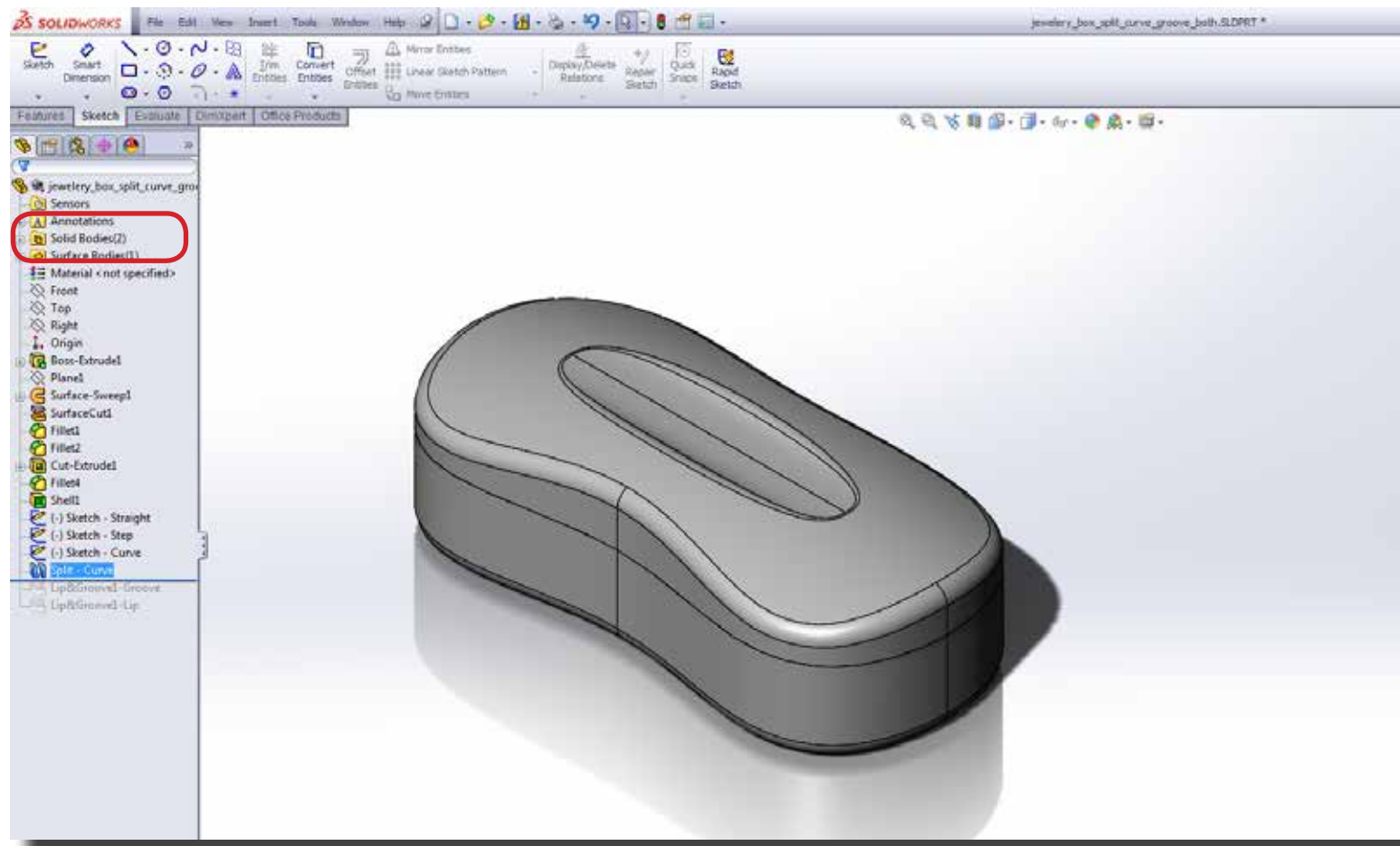
Solidworks - Using Split Tool

Step 5 After you click on 'Cut Part', it lists the resulting parts after cutting the original body. Choose the parts you want to keep from the list. In this case there were two resulting parts and both of them were chosen. Once you choose all the parts you want, hit confirm.



Solidworks - Using Split Tool

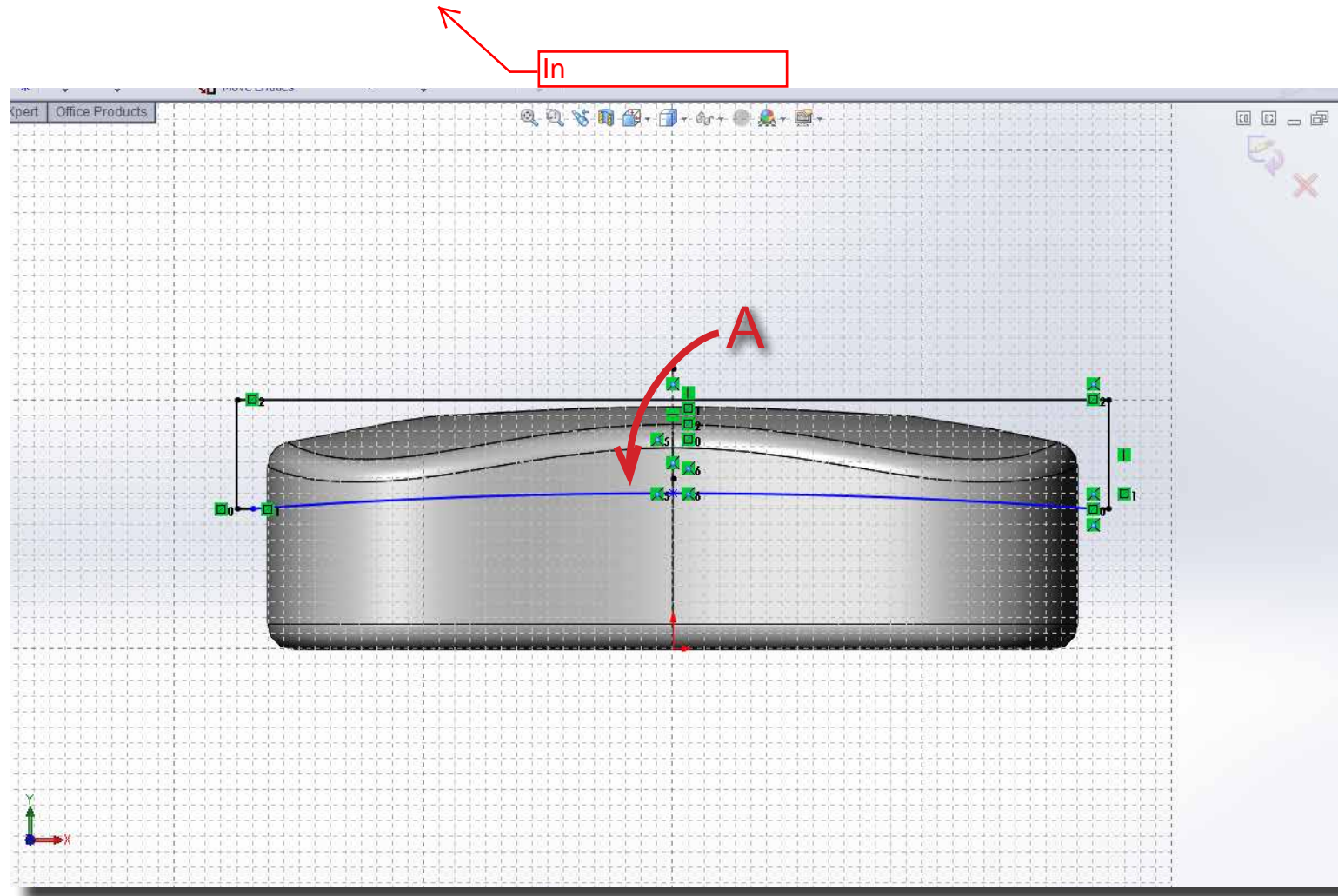
Step 6 The Feature Tree will now include a folder called Solid Bodies and list the resulting bodies in the folder.



Solidworks - Using Split Tool

Step 7 To create a curved split, all you need to do is change the sketch.

Start the sketch by creating a curved line (A) where you want to split the body. Then create a loop around one of the parts that would result after the split. In this case the top part was encapsulated. Repeat steps 3 through 6.



Solidworks - Using Split Tool

Step 8 You can create a step split in similar fashion by just changing the sketch.

Start the sketch by creating a step line (A) where you want to split the body. Then create a loop around one of the parts that would result after the split. In this case the top part was encapsulated. Repeat steps 3 through 6.

