

Create a layer comp

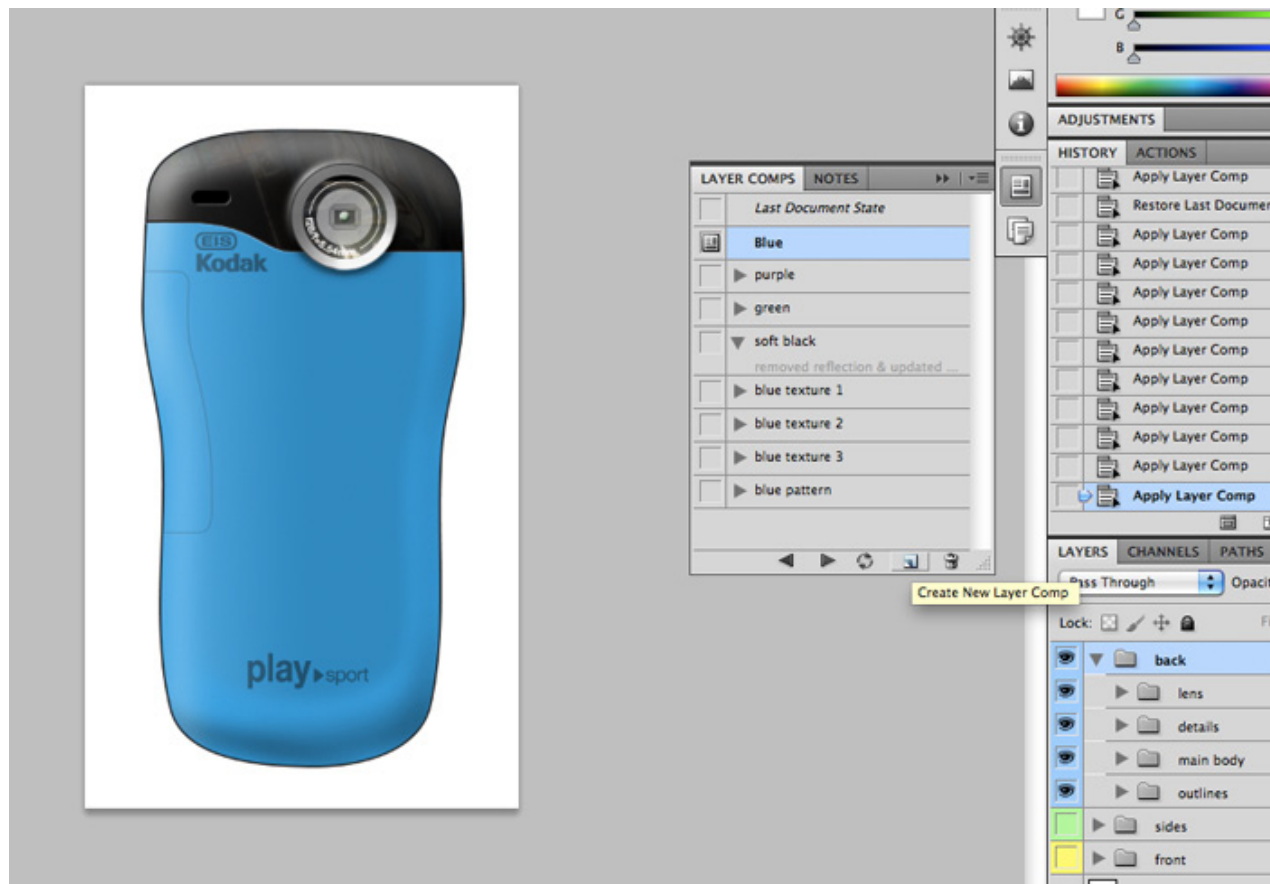
Using layer comps, you can create, manage, and view multiple versions of a layout in a single Photoshop file.

A layer comp is a snapshot of a state of the Layers panel. Layer comps record three types of layer options:

Layer visibility—whether a layer is showing or hidden.

Layer position in the document.

Layer appearance—whether a layer style is applied to the layer and the layer's blending mode.

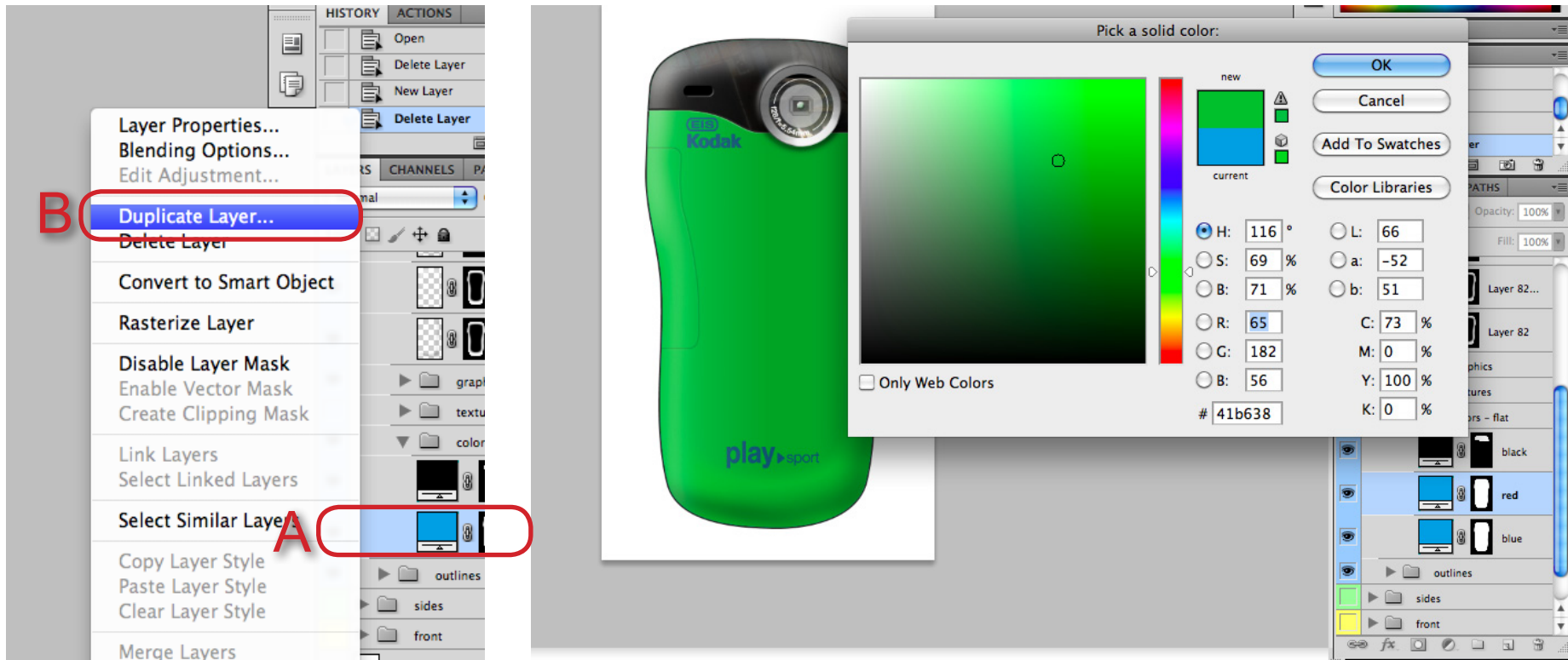


Setting Up the Layers

Step 1: Assuming that you have made a layer mask for main body and have a basic color for that layer, Right Click on that layer(A) and select 'Duplicate Layer'(B).

Step 2: Double click on the duplicated layer to open up the color palette. Pick the color variation you want for your product.

Step 3: Create as many color variations as you want by repeating steps 1 & 2.



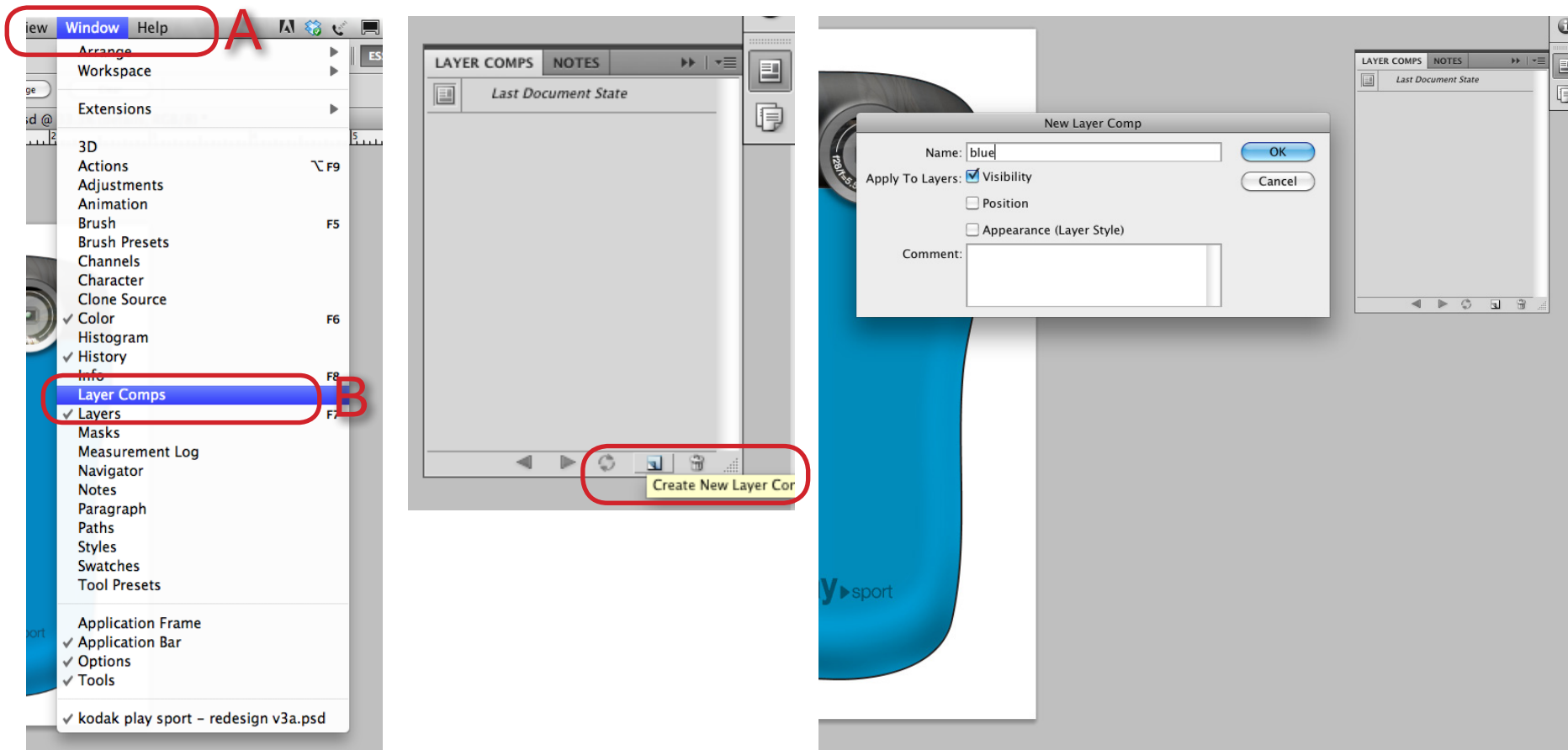
Creating Layer Comps

Choose Window > Layer Comps to display the Layer Comps panel.

Click the Create New Layer Comp button at the bottom of the Layer Comps panel.

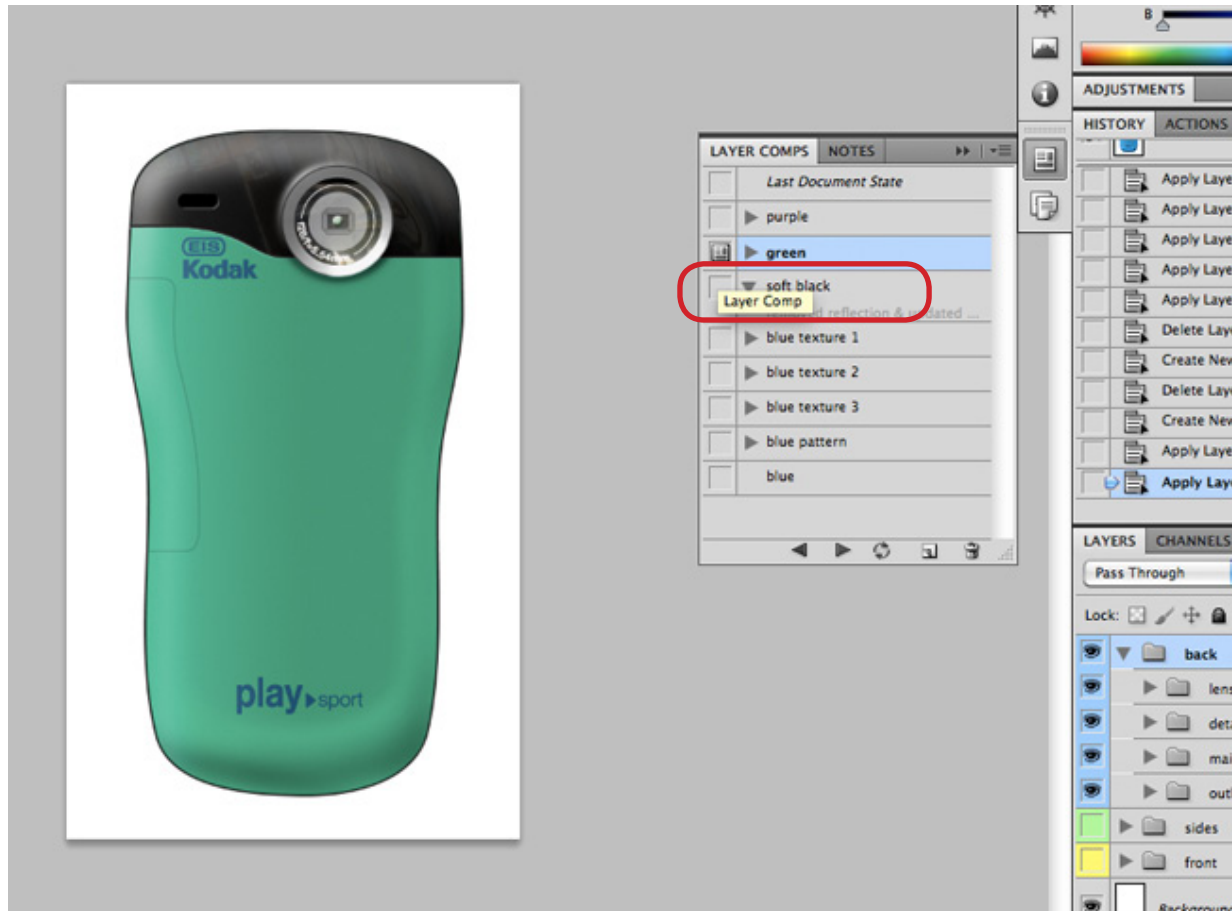
In the New Layer Comp dialog box, name the comp, add descriptive comments, and choose the Visibility option to apply to layers: Visibility

Click OK. The options you chose are stored as defaults for your next comp.



View Layer Comps

To view a layer comp, you first need to apply it. Click the Apply Layer Comp icon next to a selected comp.

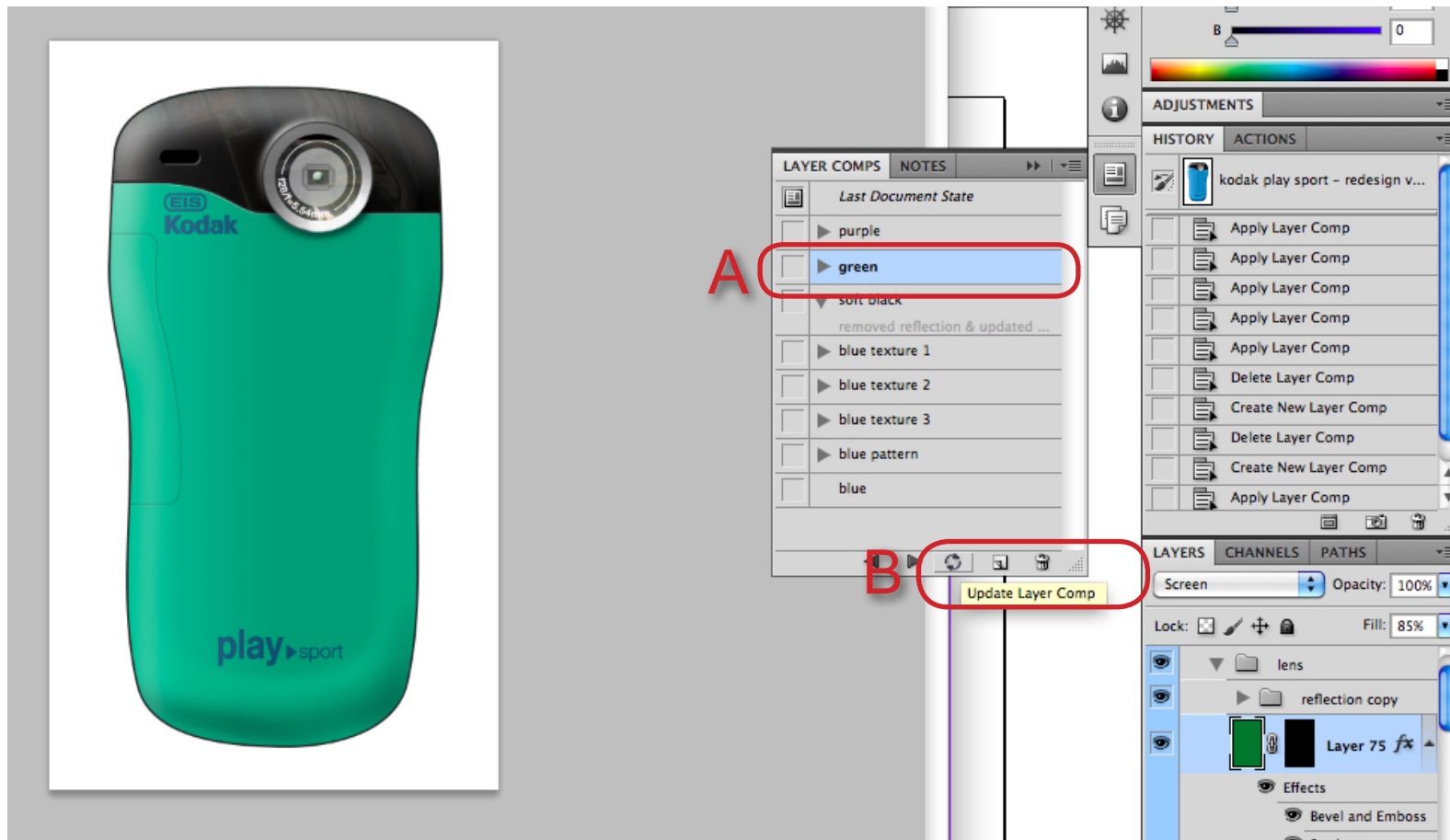


Updating a Layer Comp

Select the layer comp in the Layer Comps panel(A).

Make changes to the layer.

Click the Update Layer Comp button(B) at the bottom of the panel.



Position Layer Comp

If you want to change position of a part, make those changes on the layers.

Then create a new layer comp and toggle on the position and visibility.

