

Entourage Elements using ArchVision Dashboard



Topics Covered:

- Creating an account in ArchVision Dashboard
- Activating ArchVision License
- Rendering custom entourage elements
- Adding entourage elements to Photoshop
- Color matching entourage elements with the background



Dashboard x

Deepak


← → ↻ <https://www.archvision.com/dashboard> ☆

Sign In | Home | Support | Buy

ARCHVISION

Products ▾

ArchVision Dashboard (included with subscription)



Install Dashboard in seconds!

ArchVision Dashboard simplifies how RPC plug-ins and Content are downloaded and installed and helps you organize and get to the content you need quickly.

ArchVision Dashboard gives you everything you need to get started now:

- Free Trial to place and render demo content
- Instant Access to Thousands of RPCs
- Automatic Plug-in Installation
- Searchable Content
- Drag & Drop RPCs into Scenes or Windows Folders
- Make license purchases directly in Dashboard

Download ArchVision Dashboard

Dashboard is designed to detect and install your plug-ins.
Should you need to manually install one you should find it [here](#).
Click [here](#) for network deployment options.

INCLUDED IN SUBSCRIPTION

- RPC SUBSCRIPTION CONTENT
- RPC PLUG-INS
- RPC CREATOR
- ARCHVISION DASHBOARD
- ARCHVISION VIEWPORT
- ENTOURAGE WORKSHOP

b f t g+ You Tube

**GET STARTED NOW!
CLICK TO INSTALL
DASHBOARD**

>

Buy It Now

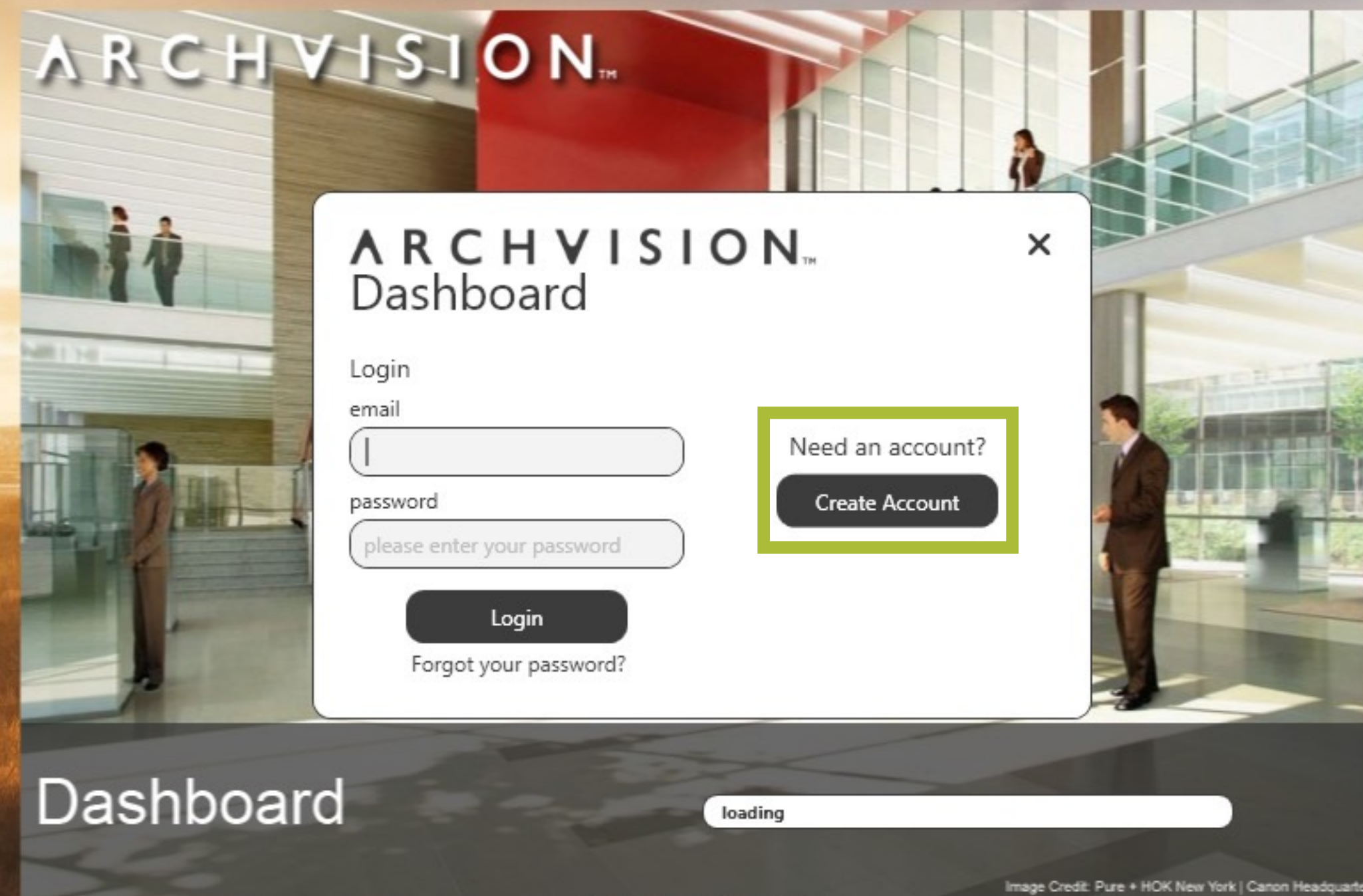
About Contact terms & conditions facebook twitter google+ youtube blog help labs

© Copyright 2015 ArchVision, Inc. All rights reserved.

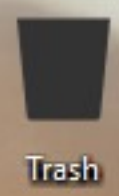
<https://www.archvision.com/dashboard/download>

✉ **Leave a Message**

If ArchVision Dashboard is not already installed in the computer, visit www.archvision.com/dashboard and download the setup file. Run the setup and install the program.



When you launch ArchVision Dashboard for the first time, you will be asked to log in with your account. If you don't already have one, create a new one by clicking on the 'Create Account' button.



The image shows a desktop background with a cityscape at sunset. In the center, there is a large window displaying the ArchVision Dashboard. The dashboard has a white background with a red header. The main content area is divided into two sections: 'Create an account' on the left and 'Already have an account?' on the right. The 'Create an account' section includes input fields for 'first name' (Deepak), 'last name' (Selvaraj), 'email' (dselvaraj@gatech.edu), 'password' (masked with dots), and 'confirm password' (masked with dots). There is a checkbox for 'I agree to the terms of service' and a 'Create Account' button. The 'Already have an account?' section has a 'Login' button. The dashboard also features a large 'ARCHVISION™' logo at the top and a 'Dashboard' label at the bottom left. The background of the dashboard shows a modern building interior with people.

ARCHVISION™

Dashboard

Create an account

first name
Deepak

last name
Selvaraj

email
dselvaraj@gatech.edu

password
•••••

confirm password
•••••

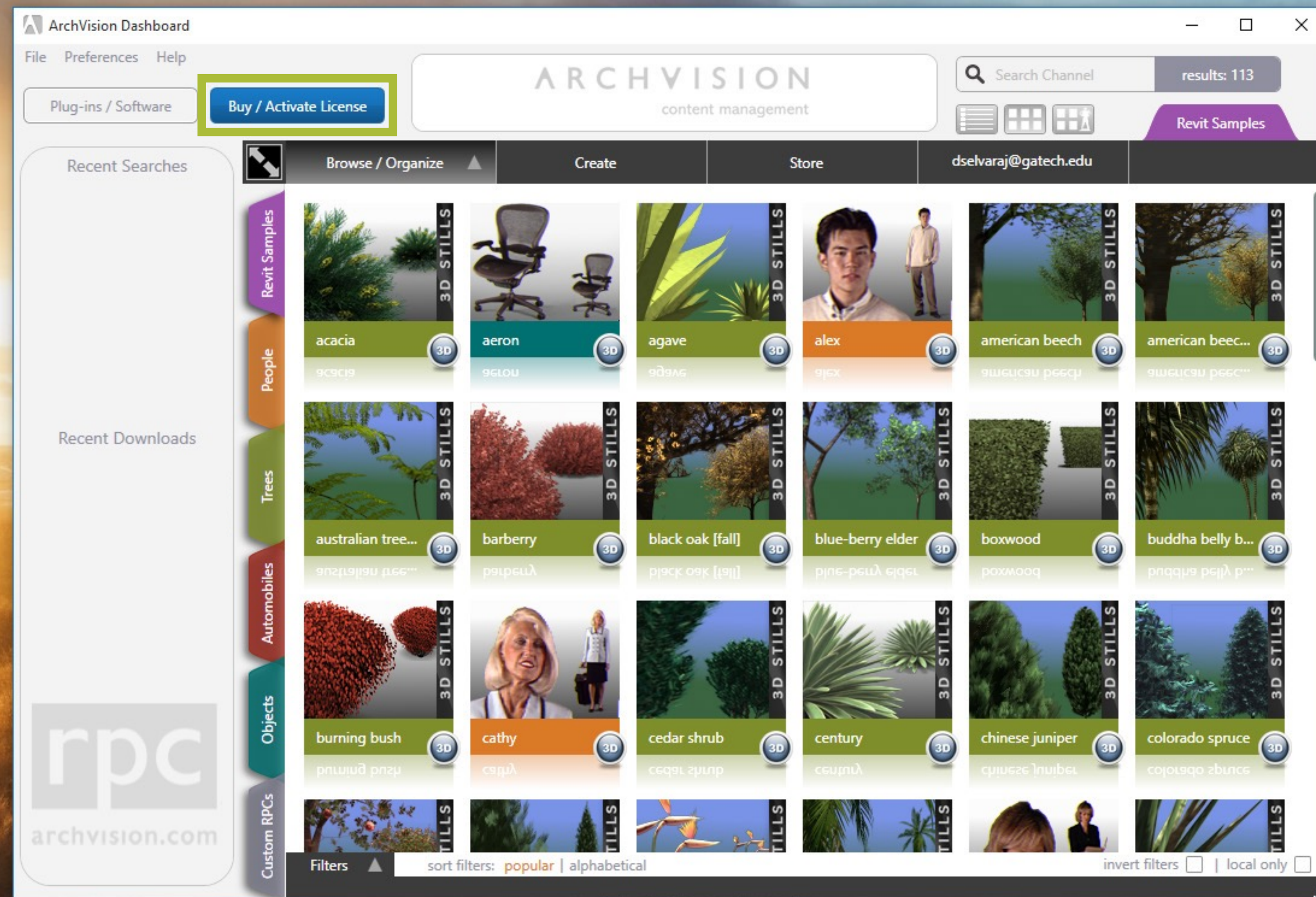
☒ I agree to the [terms of service](#)

Create Account

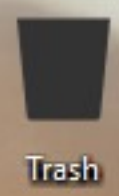
Already have an account?

Login

IMPORTANT: When you fill in your information, make sure to use your Georgia Tech .edu email address.



Once logged in, click on the 'Buy/Activate License' button.



ArchVision Dashboard

File Preferences Help

Plug-ins / Software

Buy / Activate License

ARCHVISION

content management

Search Channel

results: 113

Store

dselvaraj@gatech.edu

Revit Samples

Recent Searches

Recent Downloads

Click Here to Purchase

No license found for dselvaraj@gatech.edu

Copy and paste your License Activation Code.

Activate

Object and RPC Plug-ins for Autodesk 3ds Max, Autodesk AutoCAD, Autodesk Revit, Adobe Photoshop and more for one low annual license fee!

License includes RPC Plug-ins and RPC Content:

RPC Plug-in Software:

Adobe Photoshop
 Autodesk 3ds Max / 3ds Max Design
 Autodesk AutoCAD
 Autodesk Revit

RPC Content:

3,500+ People, Trees, Automobiles & Objects
 1500+ RPC Stills [2D]
 180+ RPC Automobiles [3D]
 Bonus Content: New RPC Content added regularly

ArchVision Software Licenses are recurring billing products. Licenses are annual and automatically renew to ensure license operability. Advance renewal notice reminders are provided to enable billing updates for early renewal or non-renewal.

Select the license type you need:

<div>Floating License</div> <div>One year license. One concurrent network user.</div> <div>\$499.00/Year</div> <div>Buy This Plan</div>	<div>User License</div> <div>One year license. License assigned to a single user.</div> <div>\$249.00/Year</div> <div>Buy This Plan</div>
---	---

rpc

archvision.com

Use the activation code that you received in the email and click Activate.

ArchVision Dashboard

File Preferences Help

Plug-ins / Software License

ARCHVISION content management

Search Channel results: 113

Revit Samples

Store dselvaraj@gatech.edu

Recent Searches

You are currently a licensed user. Your license is administered by tim.purdy@coa.gatech.edu and expires Wednesday, July 13, 2016.

Recent Downloads

People

Trees

Automobiles

Objects

Custom RPCs

rpc archvision.com

Filters sort filters: popular | alphabetical

invert filters ☐ | local only ☐

3D STILL

acacia

aeron

agave

alex

american beech

american beech...

australian tree...

barberry

black oak [fall]

blue-berry elder

boxwood

buddha belly b...

burning bush

cathy

cedar shrub

century

chinese juniper

colorado spruce

common apple

common juniper

crane lily

cuban royal pal...

cynthia

dagger

daphne

dogwood [fall]

douglas fir

dwayne

eastern hemlock

elm [sapling] [f...

fan palm

florence

forsythia

fountain grass

fountain grass

fraser photina

fraxinus

gold flame spir...

golden malay...

golden-chain

grass palm

gray birch

gray birch [fall]

hawthorn

hibiscus syriacus

holly

holly

holly [miniature]

honey myrtle

honey-locust

honey-locust [f...

hurricane palm

hydrangea

italian cypress

japanese fern

japanese fiber...

japanese flowe...

japanese maple

japanese mapl...

jay

The product must now be fully activated with access to all the features.

ArchVision Dashboard

File Preferences Help

Plug-ins / Software License

ARCHVISION
content management

Search Channel results: 1181

People

Recent Searches

Browse / Organize Create Store dselvaraj@gatech.edu

Revit Samples

People

Trees

Automobiles

Objects

Custom RPCs

Recent Downloads

allene 100%

allene

Filters sort filters: popular alphabetical

allene | 12.21MB | C:\RPC\11_Allene_19101_x01202.rpc

invert filters | local only

Once you find a model that you would like to use, click on the 3D icon in the bottom right to download the file to the Dashboard. You can verify that the file has downloaded by looking under the Recent Downloads panel on the left.



Change the view on the top right to enable the Preview pane. This brings up a full sized interactive preview panel which can be used to position the model.

Recent Searches

Browse / Organize

Create

Store

dselvaraj@gatech.edu

Revit Samples

People

Trees

Automobiles

Objects

Custom RPCs

Recent Downloads

allene

100%

rpc
archvision.com

Edit Properties



Click and drag.



Click and drag inside the preview area to turn and position the model. Now click on the Render button to generate a rendered image. This should show up in the area below the Preview panel.

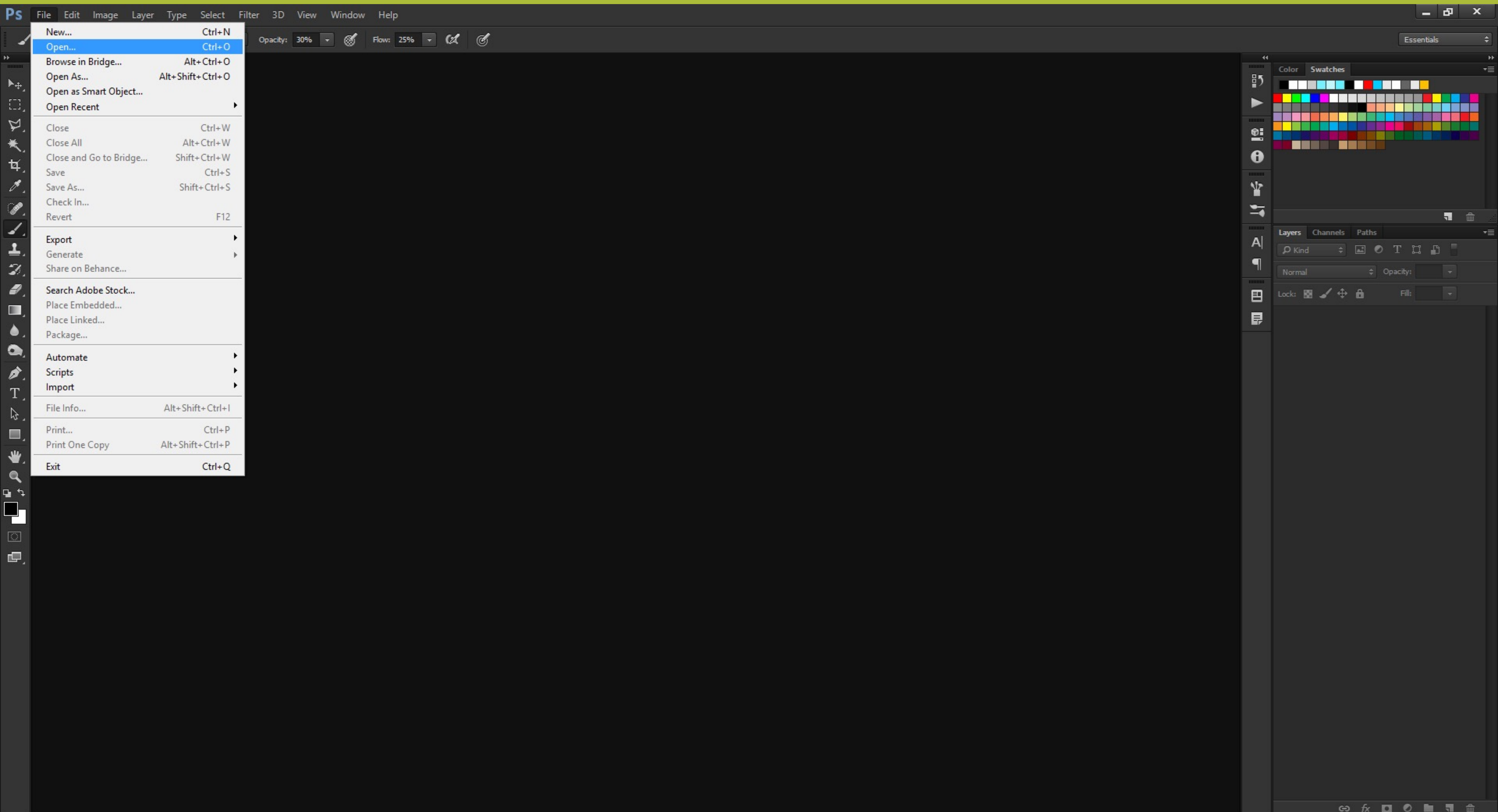
The screenshot shows the ArchVision Dashboard application window. The interface includes a top navigation bar with 'File', 'Preferences', and 'Help' menus. A search bar at the top right shows 'Search Channel' with 'results: 1181'. The main content area is divided into a left sidebar with 'Recent Searches' and 'Recent Downloads' (showing 'allene' at 100%), and a central grid of 3D models categorized by 'People'. The models are arranged in a grid with names like 'aaron', 'adam', 'adel', 'aji', 'alen', and 'alex'. A large preview window on the right displays a selected model of a woman in a red dress. Below the preview is a 'Render' button and a small thumbnail of the rendered image. A green arrow points from this thumbnail to a file icon on the desktop labeled 'rpc_allene0.png'. The desktop background is a cityscape at sunset. Desktop icons include 'Trooper', 'Trash', and 'ArchVision Dashboard'.

Drag and drop the rendered image to your desktop to save it.

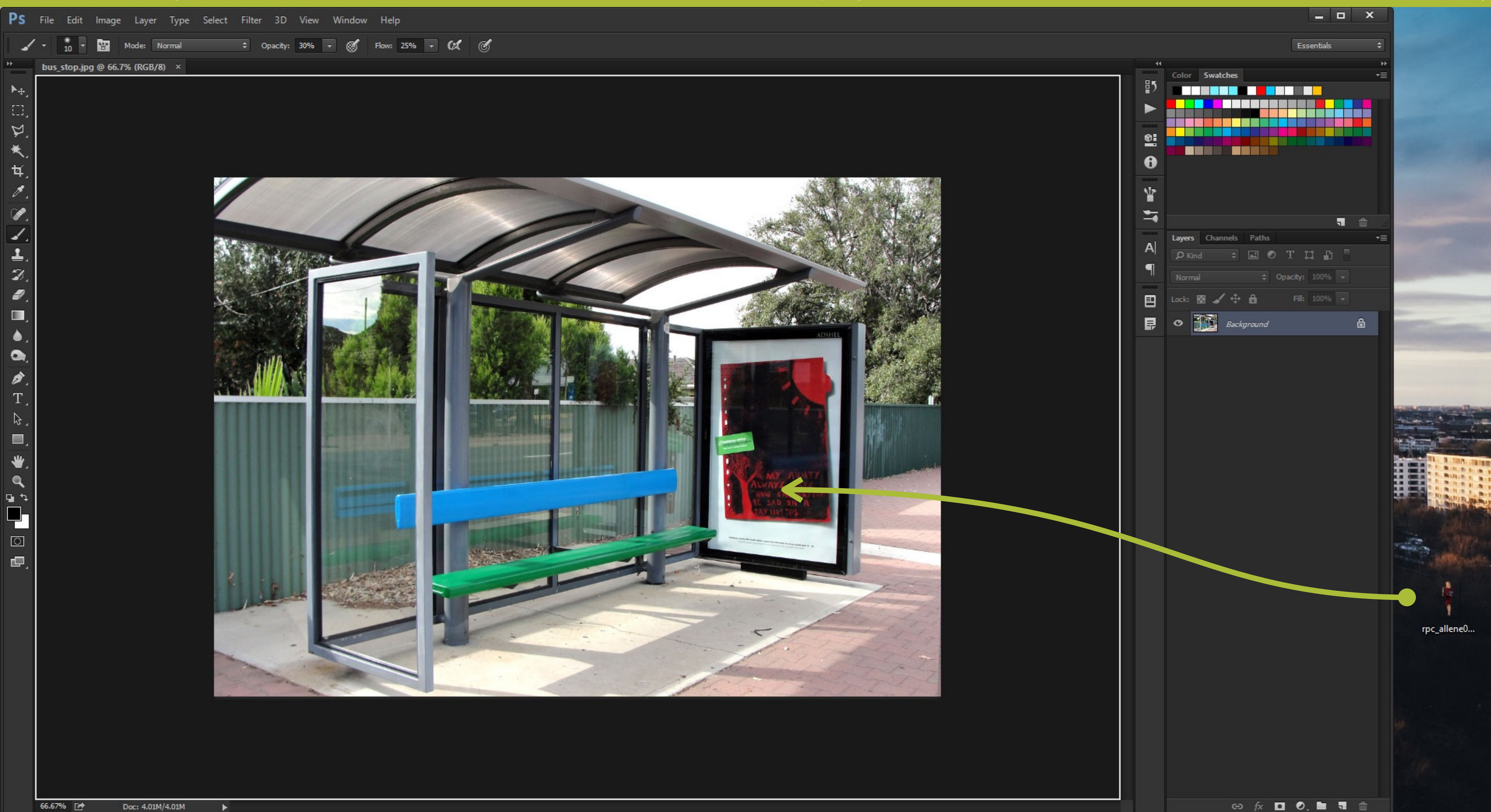


rpc_allene0...

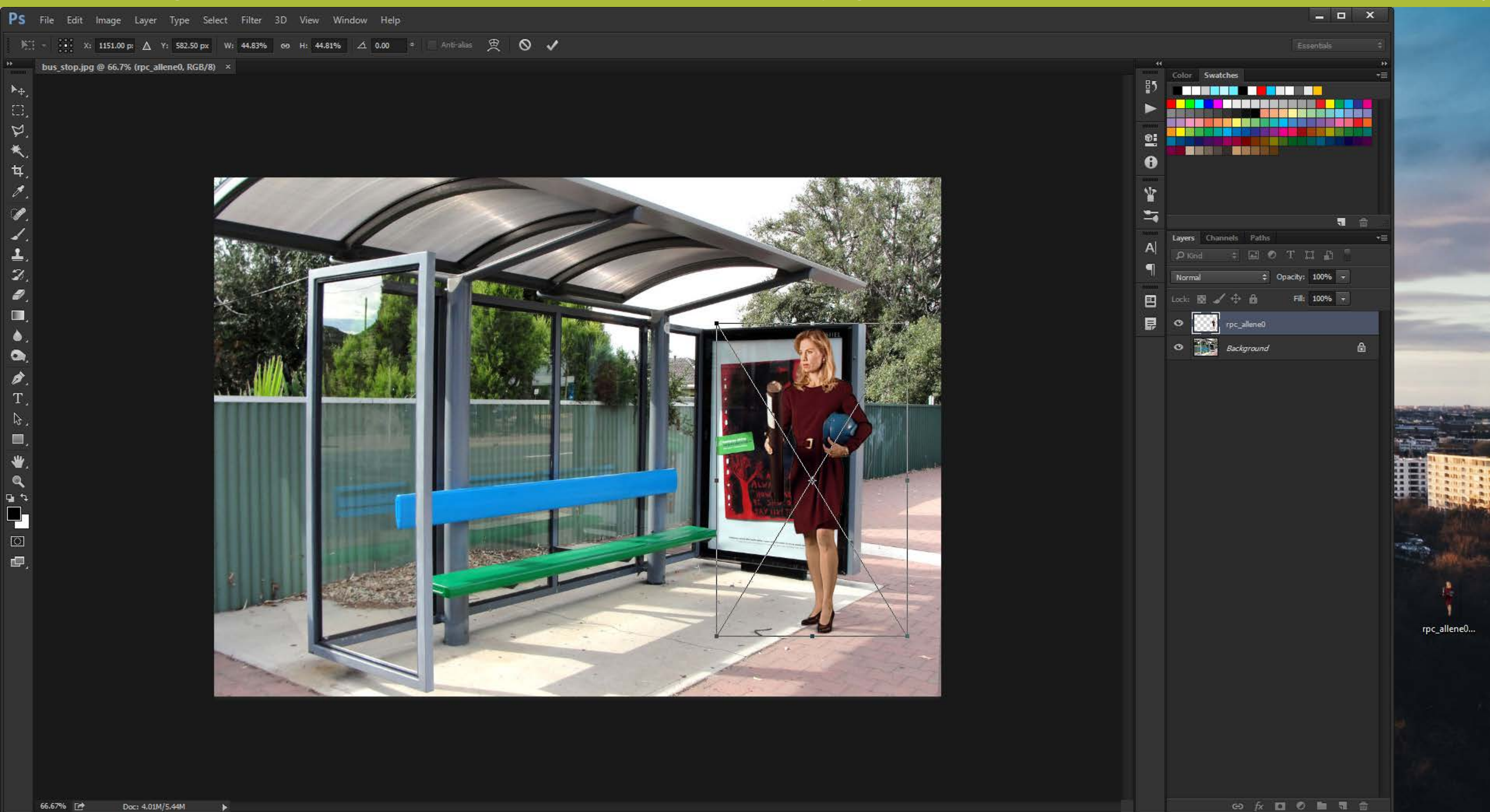
Open Photoshop.



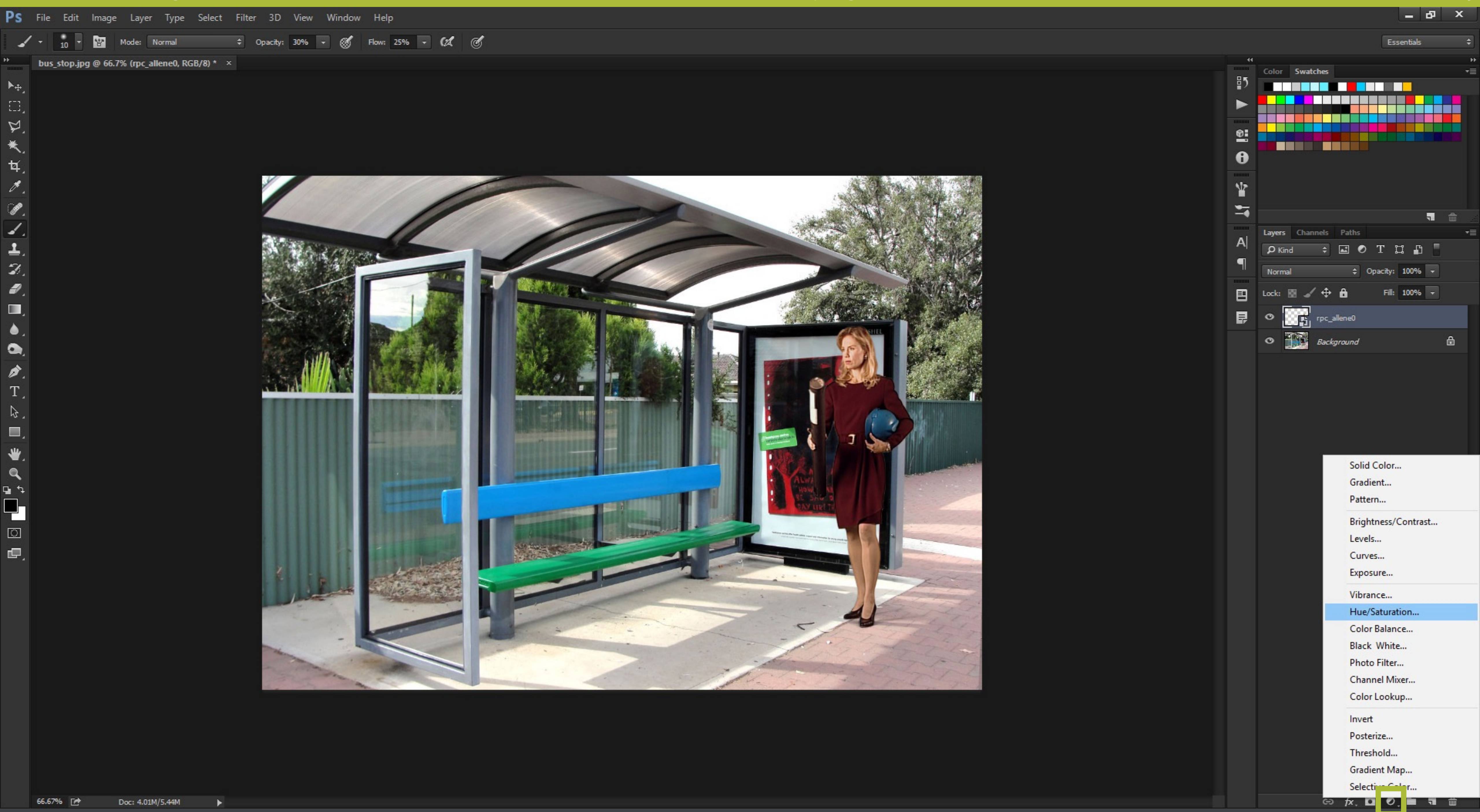
Choose File > Open and navigate to the file on which the entourage element needs to be added.



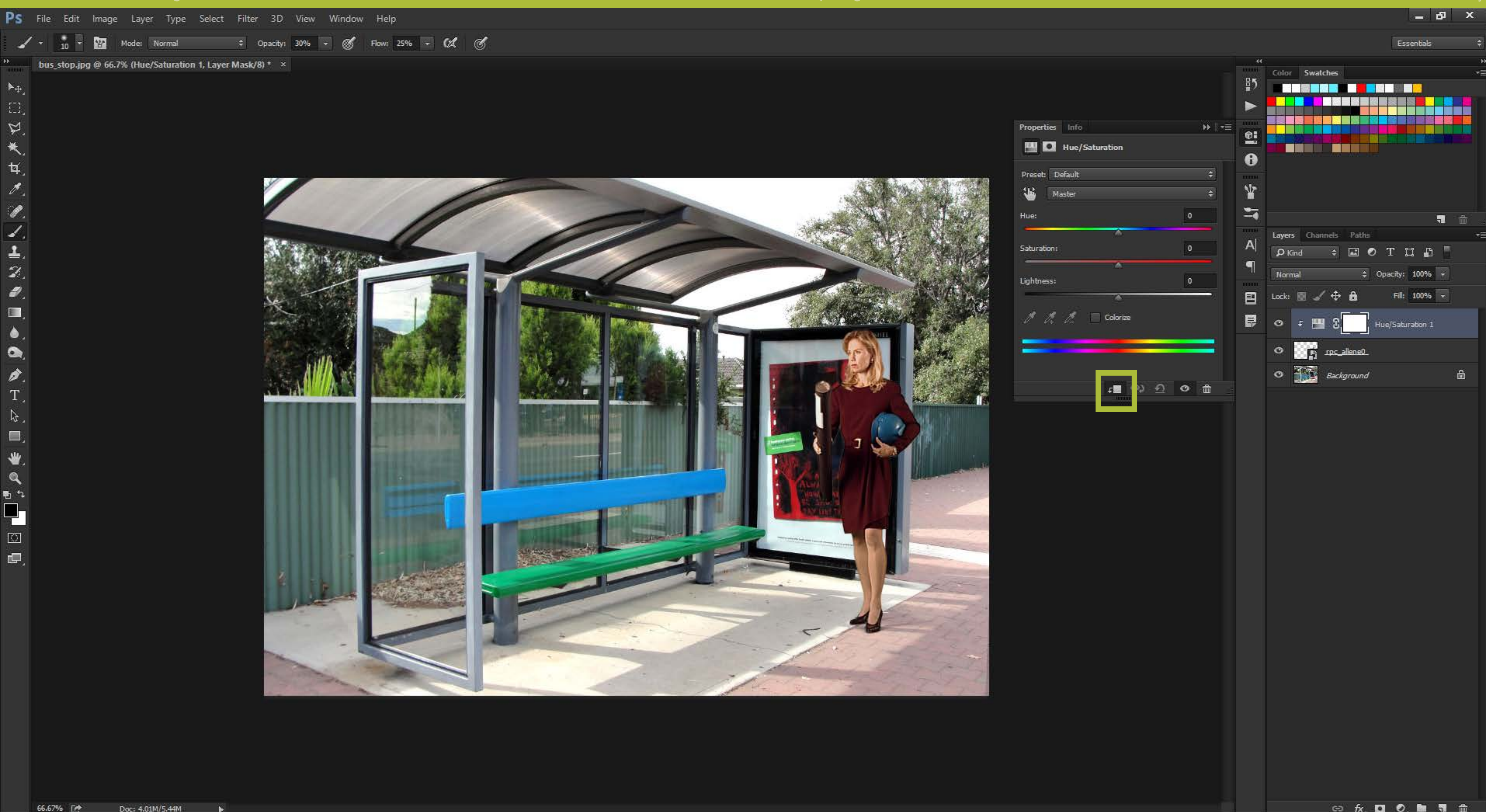
Now, drag and drop the rendered image from the Desktop on to the Photoshop window.



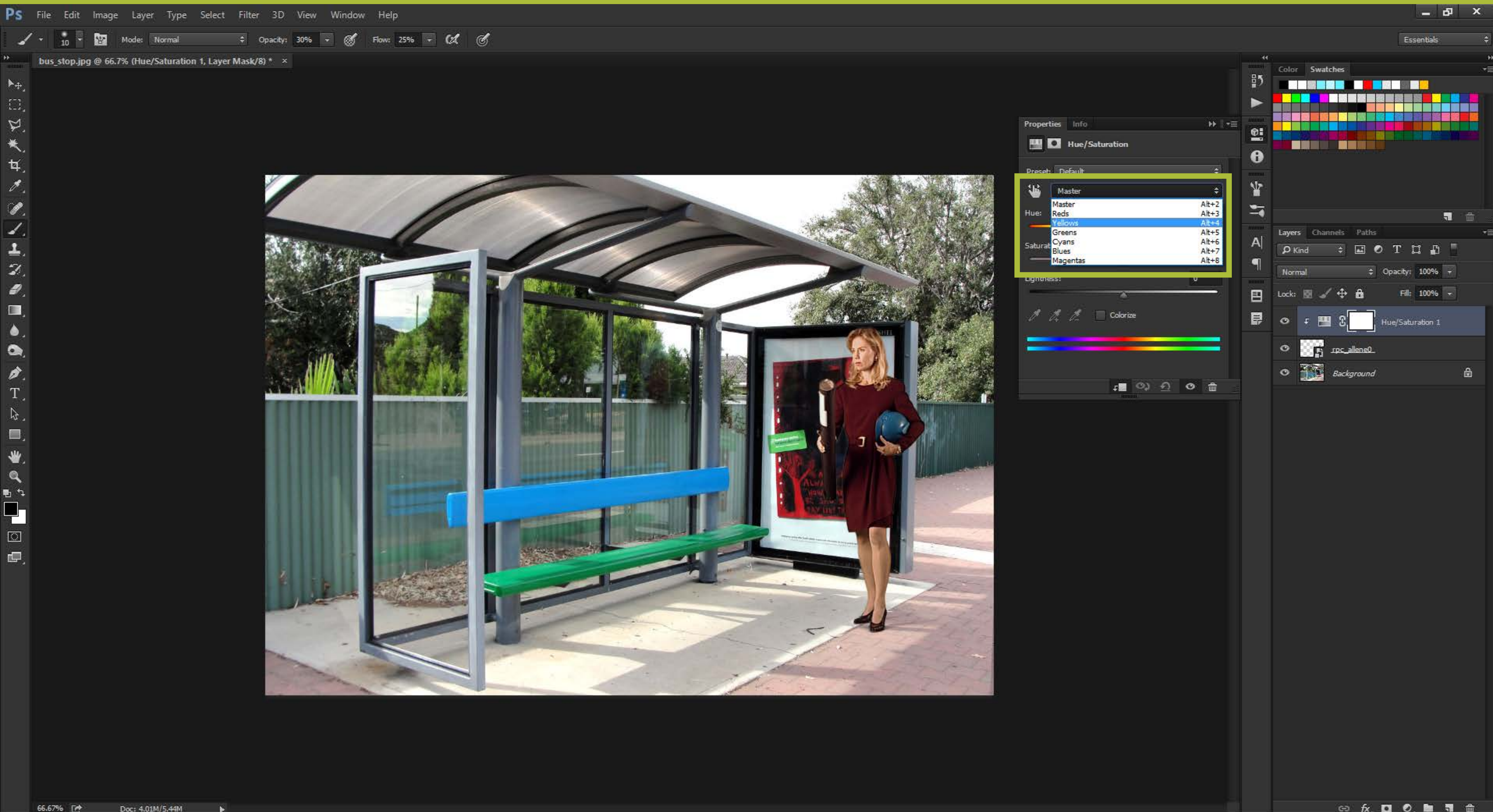
Use the corner handles while holding down Shift to scale the image proportionally. Reposition it and place in a suitable location.



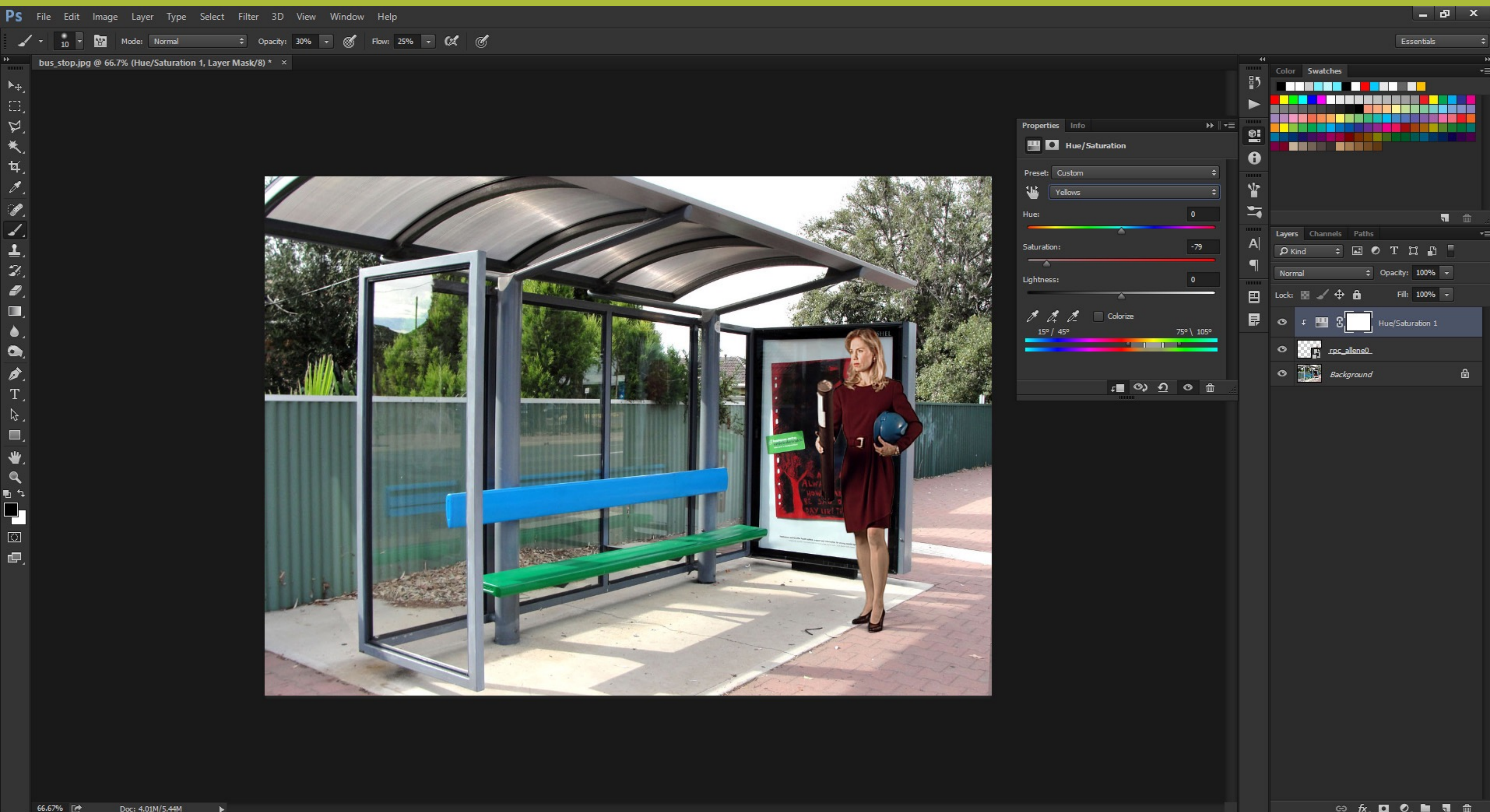
The lighting of the image does not match with the lighting of the entourage element. Let's fix this by creating a Hue/Saturation adjustment layer.



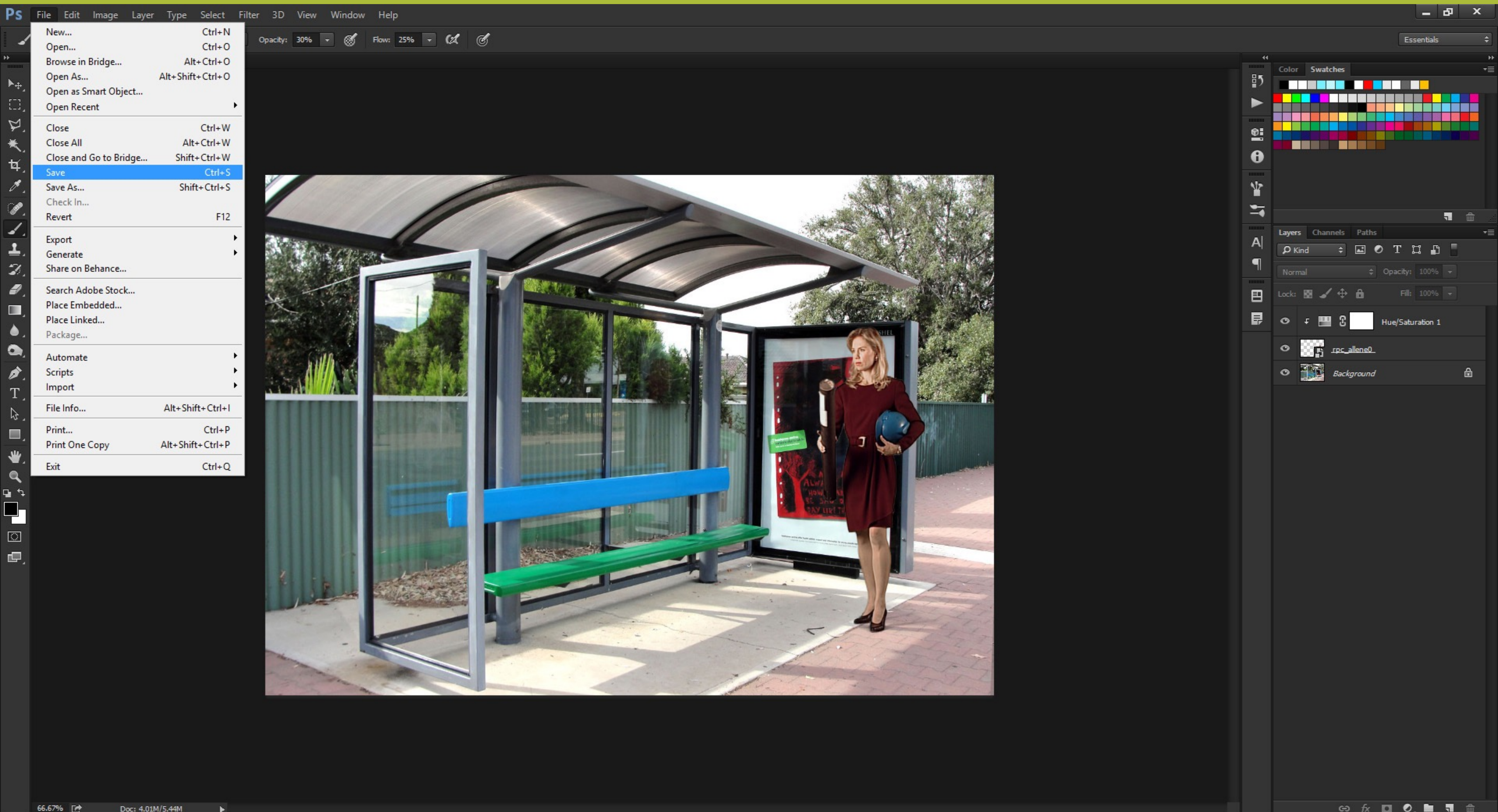
Turn on the Clip to Layer option. This ensures that the modifications made in the Hue/Saturation layer affects only the layer immediately below it (Entourage element layer) and leaves the bus stop layer as it is.



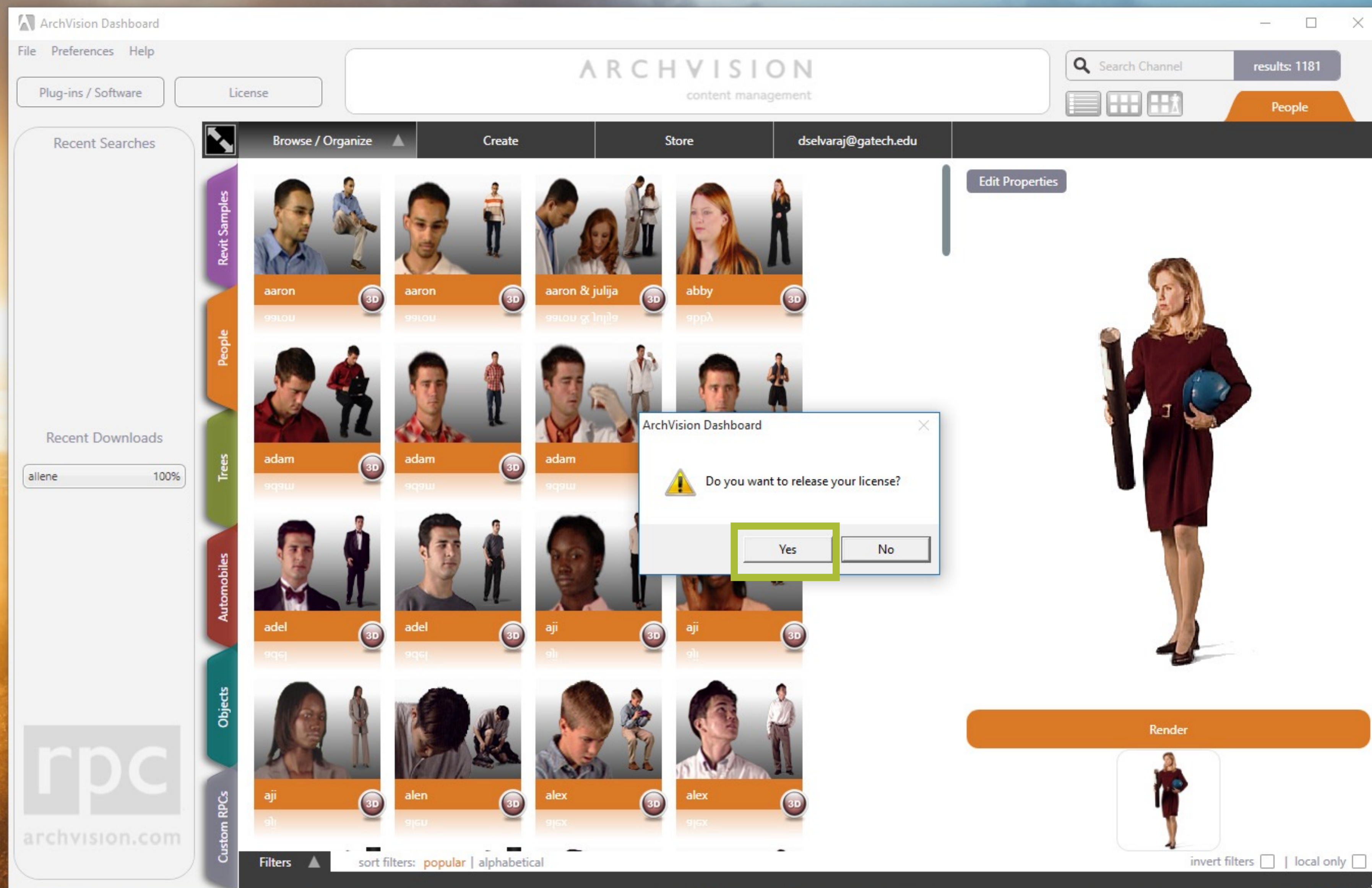
Since the entourage element appears to be yellowish, we'll reduce the yellows in the image. Choose Yellows from the target drop down box.



Now reduce the saturation slider until the image looks similar to the colors in the bus stop layer and apply the settings.



Make sure to save the file as a PSD document which preserves all the layer information and close Photoshop.



When you close the ArchVision dialogue box, the system prompts you to release the license. Make sure to click Yes. This makes the license available to other users on the School network.