



Installing **SolidWorks 2014** Student Version 1



Getting **Windows 8.1 Pro** with educational discounts 3



Installing Windows on a Mac through **Boot Camp** 5



Installing Windows on a Mac through **Parallels** 7



Using SolidWorks through **Remote Desktop** 8



Off-Campus access to Course Folders on Windows 9



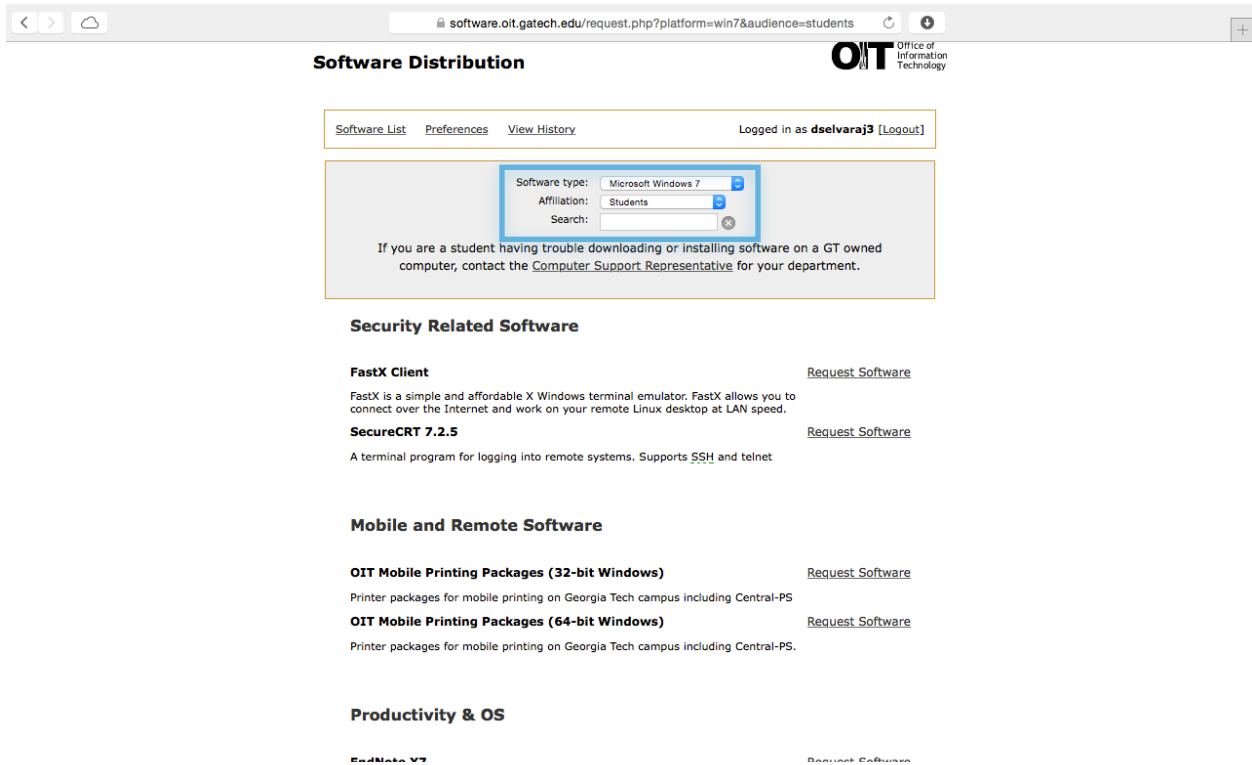
Off-Campus Access to Course Folders on Mac 10

Installing SolidWorks 2014 Student Version

SolidWorks 2014 Student Version is available for download for **free** through the Office of Information Technology's website. This can be installed on your personal computer and does not require you to be connected to the VPN.

1. Click on the following link and sign in with your GTID credentials:
<https://software.oit.gatech.edu/request.php?>

2. Choose your operating system version (Windows 7 or 8) and your GT Affiliation (Student).



The screenshot shows a web browser window with the URL `software.oit.gatech.edu/request.php?platform=win7&audience=students`. The page title is "Software Distribution" and the logo for the Office of Information Technology (OIT) is visible. The user is logged in as `dselvaraj3`. A search form is highlighted with a blue box, containing the following fields:

- Software type: Microsoft Windows 7
- Affiliation: Students
- Search: (empty text input)

Below the search form, a message states: "If you are a student having trouble downloading or installing software on a GT owned computer, contact the [Computer Support Representative](#) for your department."

The page is organized into sections:

- Security Related Software**
 - FastX Client** (Request Software): FastX is a simple and affordable X Windows terminal emulator. FastX allows you to connect over the Internet and work on your remote Linux desktop at LAN speed.
 - SecureCRT 7.2.5** (Request Software): A terminal program for logging into remote systems. Supports SSH and telnet.
- Mobile and Remote Software**
 - OIT Mobile Printing Packages (32-bit Windows)** (Request Software): Printer packages for mobile printing on Georgia Tech campus including Central-PS.
 - OIT Mobile Printing Packages (64-bit Windows)** (Request Software): Printer packages for mobile printing on Georgia Tech campus including Central-PS.
- Productivity & OS**
 - EndNote X7** (Request Software):

3. Look for 'Solid Works 2014 Standalone License for Students' in the list and click on Request Software.

The screenshot shows a web browser window with the address bar displaying `software.oit.gatech.edu/request.php?platform=win7&audience=students`. The page content includes a list of software options, each with a brief description and a 'Request Software' link. The 'SolidWorks 2014 Standalone License for Students' option is highlighted with a blue border. Below the list, there is a section titled 'GT Computer ONLY' with a note that software can only be installed on Georgia Tech-owned computers. Further down, there are more software options like Abaqus and ANSYS.

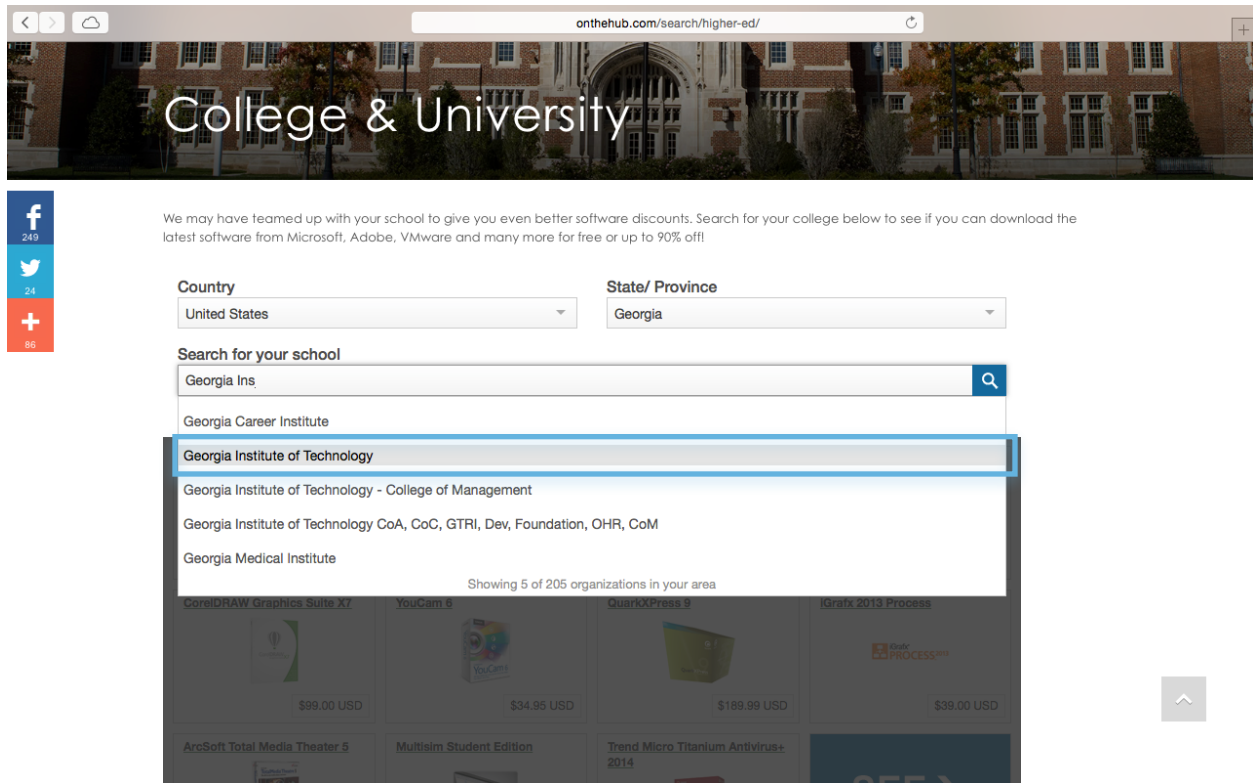
Software Name	Description	Action
NX v8.5	NX by Siemens PLM Software, a CAD/CAM/CAE commercial software suite.	Request Software
NX v9	NX by Siemens PLM Software, a CAD/CAM/CAE commercial software suite.	Request Software
SolidEdge ST6	Solid Edge with Synchronous Technology is a complete, history-free, feature-based 2D/3D CAD software system	Request Software
SolidWorks 2013	SolidWorks, a design software.	Request Software
SolidWorks 2014	SolidWorks, a design software.	Request Software
SolidWorks 2014 Standalone License for Students	SolidWorks, a design software.	Request Software
Tecplot 2013 R1	Tecplot is a data visualization package developed explicitly for engineers and scientists. More information can be found at the Tecplot home page http://www.tecplot.com	Request Software
GT Computer ONLY This software may only be installed on computers owned by Georgia Tech		
Abaqus v6.13	ABAQUS by Simulia Corporation (formerly Abaqus Inc), for advanced finite element analysis.	Request Software
Abaqus v6.14	ABAQUS by Simulia Corporation (formerly Abaqus Inc), for advanced finite element analysis.	Request Software
ANSYS 14.5.7	ANSYS is a software package used for finite element analysis.	Request Software
ANSYS v15.0.7	ANSYS is a software package used for finite element analysis.	Request Software

4. Follow the steps in the downloaded PDF file to complete the installation process.

Getting Windows 8.1 Pro with educational discounts

Microsoft Windows 8.1 Pro is available for a discounted price of **\$9.75** through the OnTheHub eStore.

1. Follow the link and choose 'Georgia Institute of Technology' from the list:
<http://onthehub.com/search/higher-ed/>



2. You will be directed to sign in using your GT account.

3. Find Windows 8 in the list below and proceed to complete the purchase.

Search for your school
Georgia Institute of Technology

Sub organization
Select a store

Here are some of the deals available on your WebStore!
Visit the [Georgia Institute of Technology WebStore](#) to see all of the exclusive discounts available to you.
For even more discounts, select your departmental WebStore from the list above.

Microsoft Office 2013 \$9.75 USD	Office 365 University \$79.99 USD	Microsoft Windows 8.1 \$9.75 USD	Microsoft Windows 8 \$9.75 USD
Microsoft Visual Studio 2012 Free	EndNote X7 \$108.95 USD	VMware Workstation 11 \$149.00 USD	RaySupreme and IFX-Supreme Bundle \$27.99 USD
Microsoft Visual Studio 2013 Free	STATISTICA - Ultimate Academic Bundle \$25.00 USD	Corel VideoStudio Pro X7 \$59.99 USD	SEE MORE

Note: Be sure to check for system compatibility with your laptop before purchasing any software.

Installing Windows on a Mac

Mac users can install and use Windows on their machines in two different ways:

- Boot Camp
- Virtualization Software (Parallels or VMware)

Boot Camp runs Windows natively on a Mac where it just functions essentially like a Windows laptop. This is the most efficient way to run Windows on a Mac and especially recommended if you have less than 8 GB of RAM. When installed via Boot Camp, you need to press and hold the Option key while booting to choose between Mac or Windows.

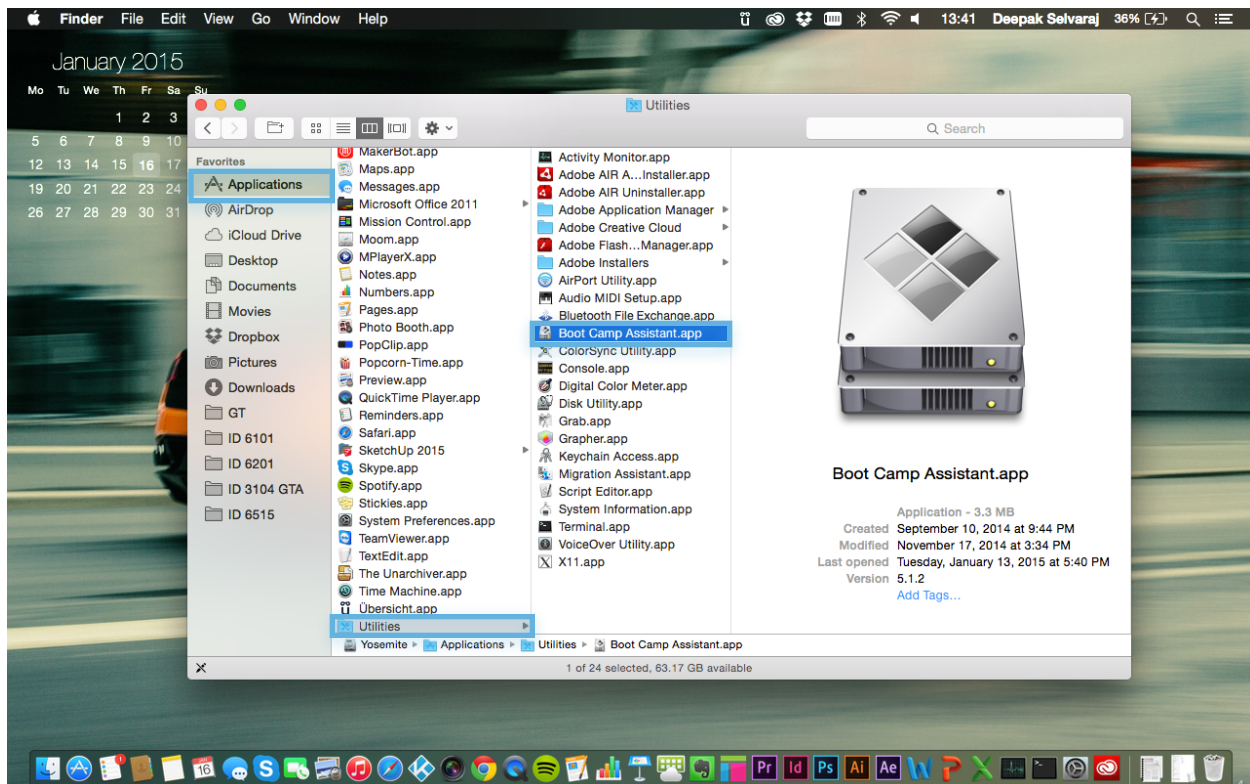
Windows can also be installed through virtualization softwares like Parallels or VMware Fusion. These programs enable to run Windows as an application inside Mac, so the system resources are divided between the Mac and Windows systems. This is like running two operating systems simultaneously on one computer which may not be quite efficient on low powered machines. But this adds the convenience of having access to both the systems at the same time.

Installing Windows through Boot Camp

You need to own a copy of Windows and the installation disk (USB or DVD) to begin the setup process. Refer to the previous section to purchase a copy of Windows through the OnThe Hub eStore with educational discounts.

Note: Be sure to check for system compatibility with your laptop before purchasing any software.

1. Start by running the Boot Camp application from the Applications > Utilities folder.

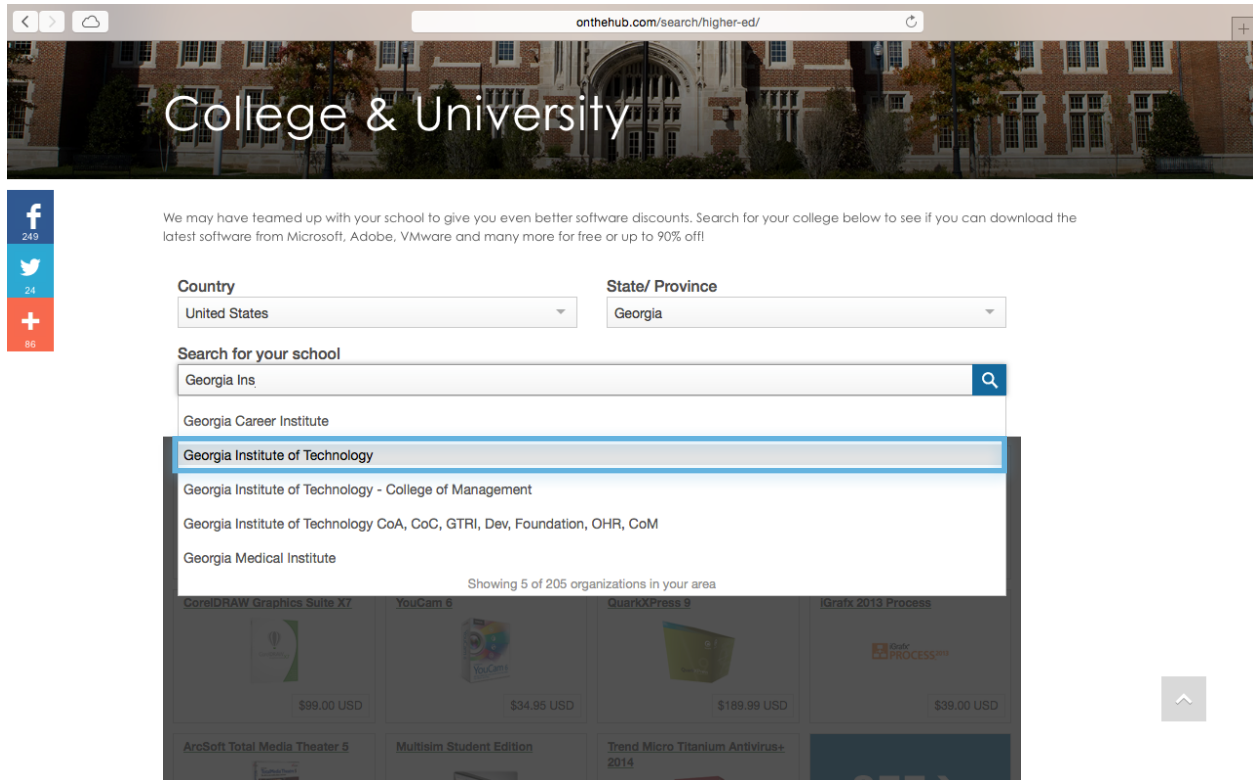


2. Follow the instructions on screen to complete the setup. There is a step-by-step guide available on Apple's Support page: <http://support.apple.com/en-us/HT201468>

Installing Windows through Parallels

Parallels can also be purchased through the OnTheHub eStore at a discounted price of \$39.99.

1. Follow the link and choose 'Georgia Institute of Technology' from the list:
<http://onthehub.com/search/higher-ed/>



2. You will be directed to sign in using your GT account.
3. Find Parallels in the list and proceed to complete the purchase.

Note: Be sure to check for system compatibility with your laptop before purchasing any software.

4. You need to own a copy of Windows and the installation disk (USB or DVD) to begin the setup process. Refer to the previous section to purchase a copy of Windows through the OnThe Hub eStore with educational discounts.

5. Instructional videos to install Windows through Parallels is available on their support page:
<http://www.parallels.com/products/desktop/support/>

Using SolidWorks through Remote Desktop

For occasional or temporary usage of Solid Works, you can access the school computers through Remote Desktop. The experience may not be smooth as this depends on your network speeds.

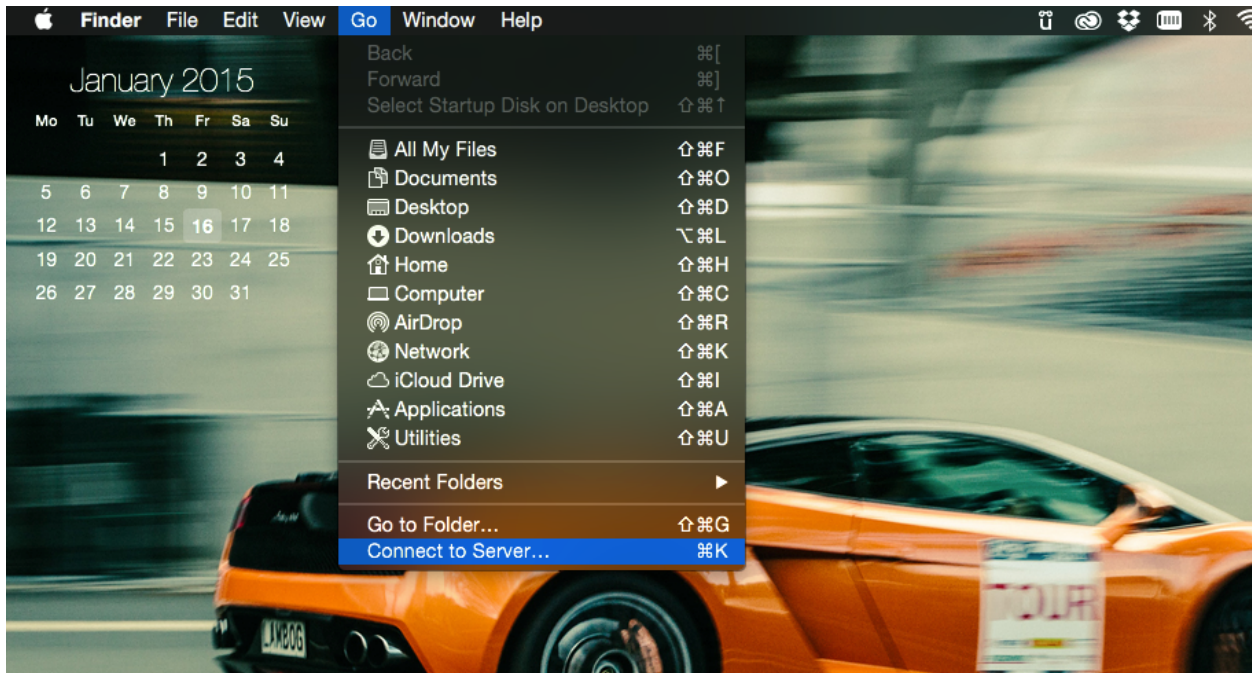
Follow the link and the on-screen information will guide you through the setup of VMware Horizon which is used to connect to the school computers and use the applications.
<https://vlab.coa.gatech.edu/>

Off-Campus access to Course Folders on Windows

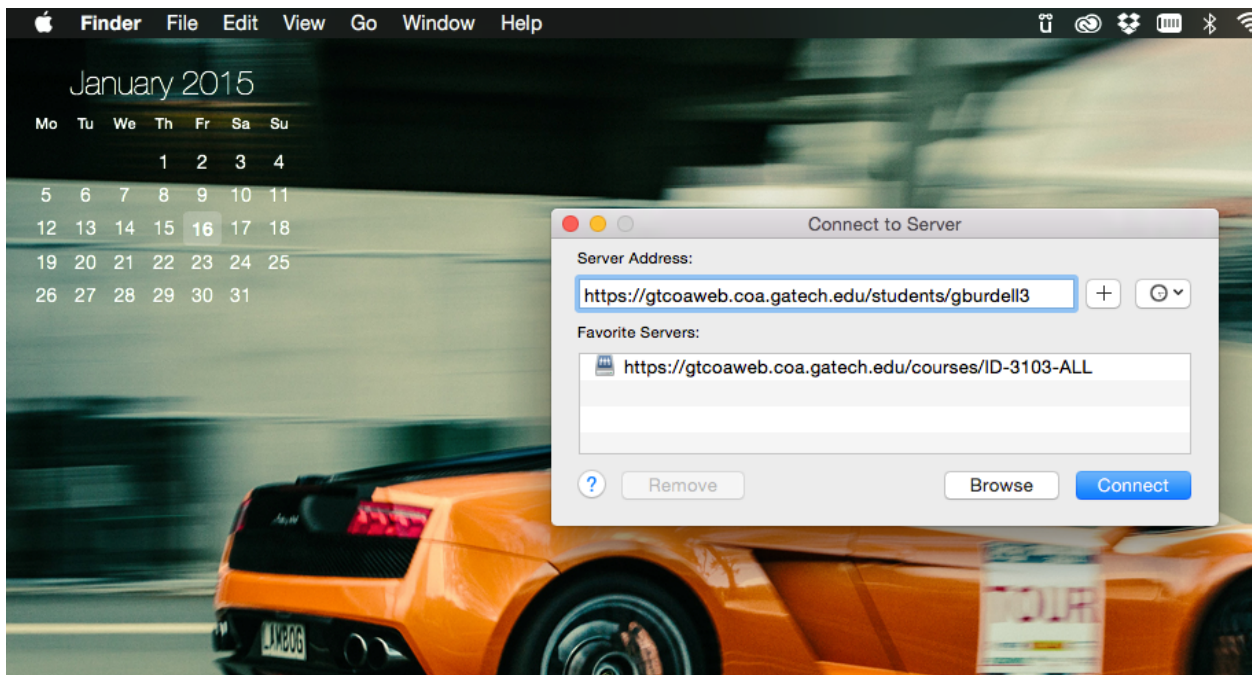
1. You need to be connected to Georgia Tech through VPN before accessing the folders.
2. Click on the following link and follow the on-screen instructions to install Cisco AnyConnect VPN Client:
<http://anyc.vpn.gatech.edu/>
3. Once the VPN connection is established, enter the following address in the address bar of the Explorer window. You will be prompted to enter your GT credentials:
\\ad.gatech.edu\gtfs\coa\courses\ID-3103-ALL
4. The following page has the address to other CoA Folders that can be accessed through this method:
<http://central.coa.gatech.edu/it/files>

Off-Campus access to Course Folders on Mac

1. With Finder active, go to Go > Connect to Server...



2. Type the following address. You will be prompted to enter your GTID credentials.
<https://gtcoaweb.coa.gatech.edu/courses/ID-3103-ALL>



3. You can also access your GT home folder through this method. Enter the following address with your GTID (gurdell3):
[https://gtcoaweb.coa.gatech.edu/students/"Your GTID"](https://gtcoaweb.coa.gatech.edu/students/)