

Intro to

Computing

ID 3103

About Me

I am a Mechanical Engineering student minoring in Industrial Design and will be graduating this summer. When I'm not building robots, I love to read, play chess, and spend my weekends outdoors climbing, hiking or skiing.



Contact Olivia Plumb



Table of Contents

Illustrator

1

Photoshop

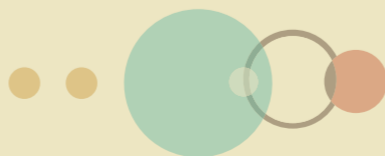
2

Axure

3

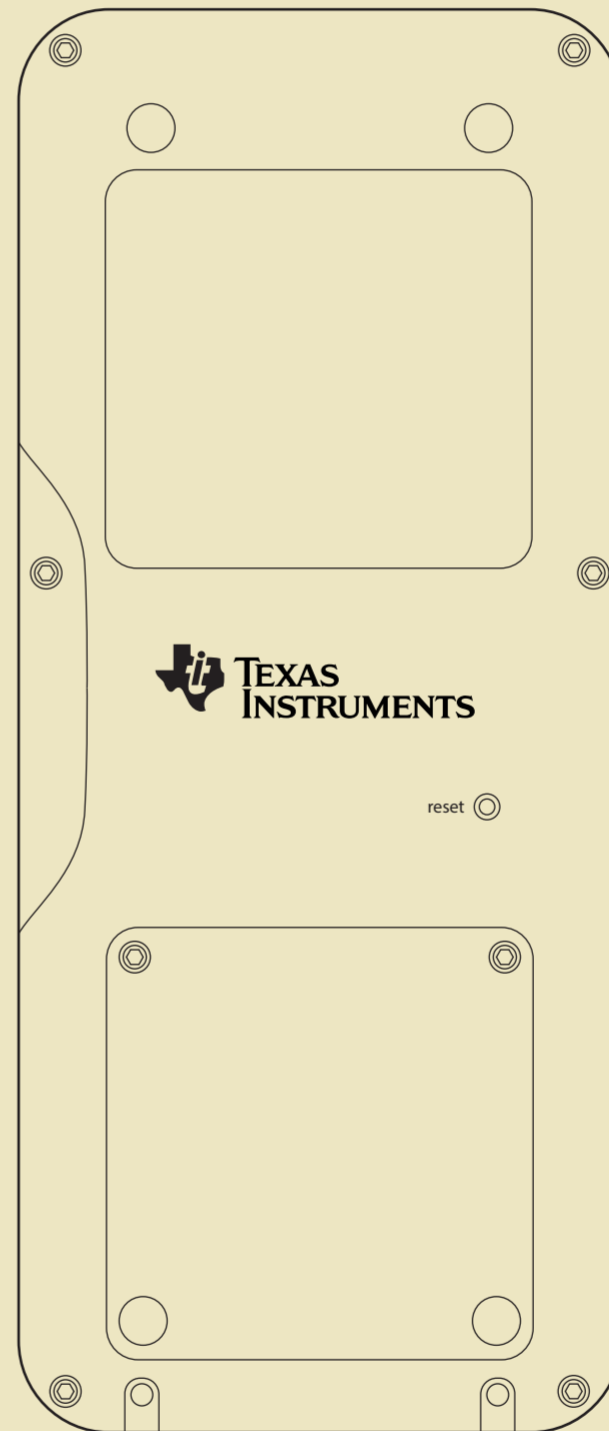
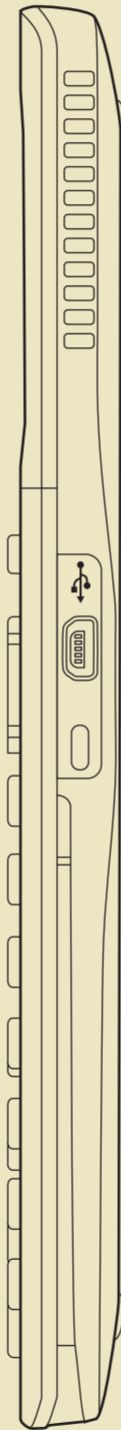
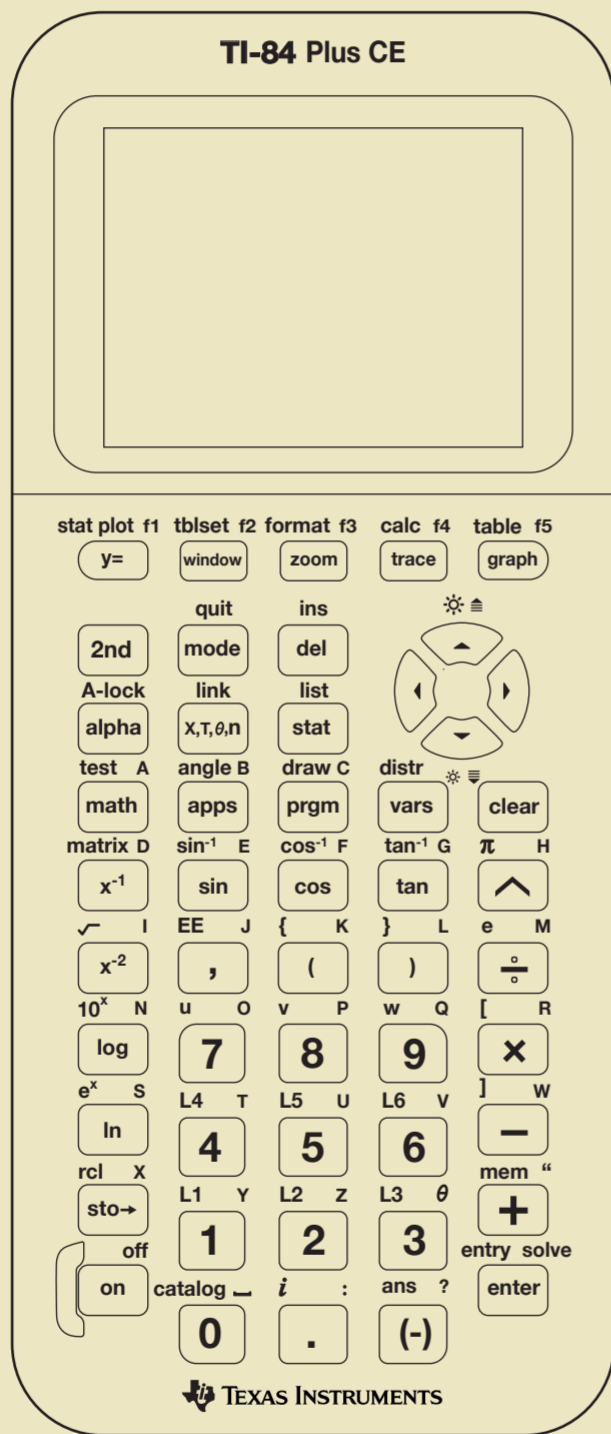
AfterEffects

4



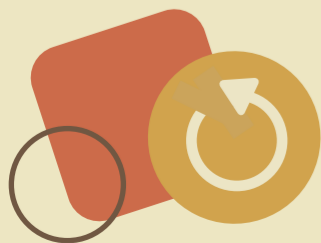
Illustrator

Adobe Illustrator was used to make vector-based outlines of the TI-84 Plus CE calculator. Six orthographic projection views were created to capture the overall form and style of the object.



Photoshop

The front, back and side views of the product were rendered using Photoshop. Non-destructive shading techniques were used to give a 3D appearance to the device.



Axure

The product interface was prototyped using Axure. Functionality of this prototype includes turning the device on and off, changing the default settings, and performing basic math operations. The full prototype can be found [HERE](#).



AfterEffects

AfterEffects was used to create a video which demonstrates how the device can be used. An animated hand is used to show buttons being pressed and the corresponding device interface.

